

WAAS CH 56524 W04A	APP CRS 040°	Rwy Idg 4401 TDZE 34 Apt Elev 35
--	------------------------	---

RNAV (GPS) RWY 4

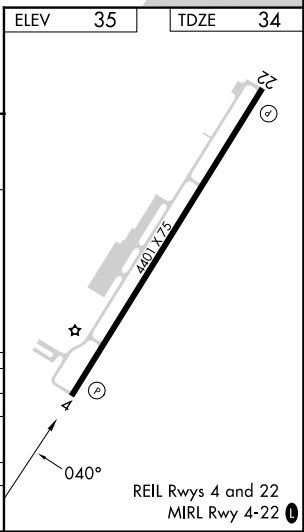
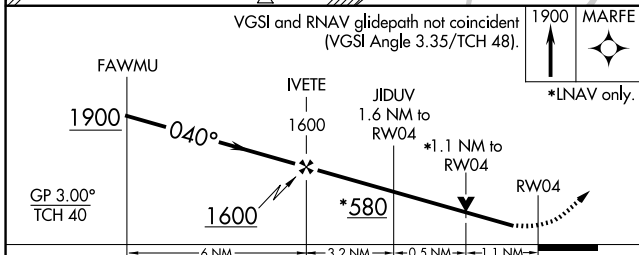
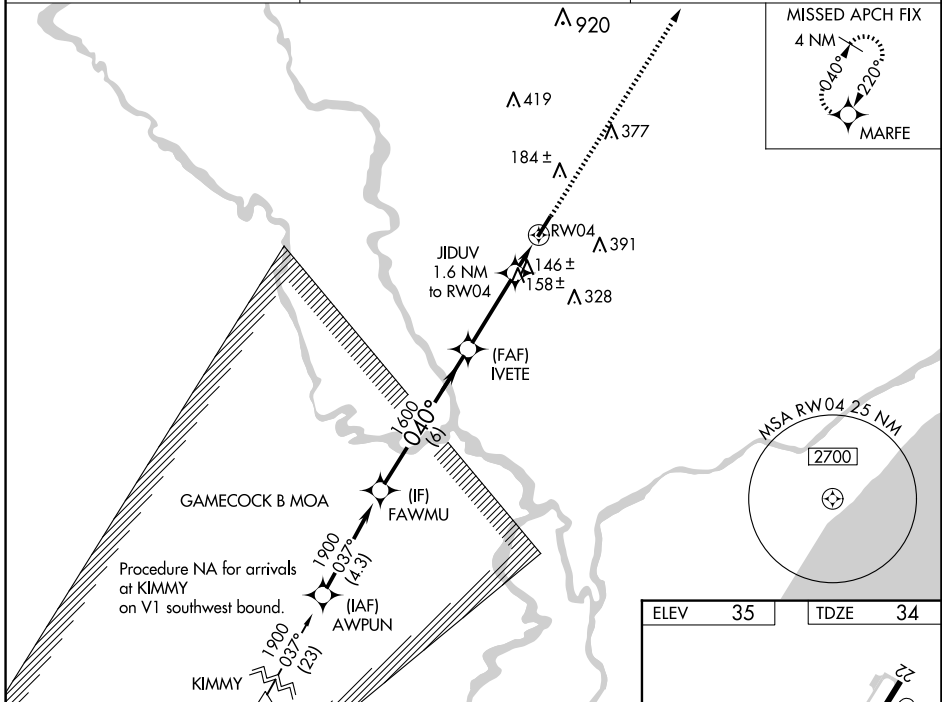
CONWAY-HORRY COUNTY (HYW)

RNP APCH.

⚠ When Circling to Rwy 22 at night, operational VGSI required, remain on or above VGSI glidepath until threshold. Rwy 4 helicopter visibility reduction below 3/4 SM NA. For uncompensated Baro-VNAV systems, LNAV/VNAV NA below -15°C or above 54°C.

MISSED APPROACH: Climb to 1900 direct MARFE and hold.

AWOS-3 119.525	MYRTLE BEACH APP CON★ 127.4 257.95	UNICOM 122.7 (CTAF) 0
--------------------------	--	---------------------------------



SE-2, 14 MAY 2026 to 11 JUN 2026

SE-2, 14 MAY 2026 to 11 JUN 2026