

APP CRS 182°	Rwy Ldg TDZE Apt Elev	5005 319 324
------------------------	-----------------------------	---

RNAV (GPS) RWY 18

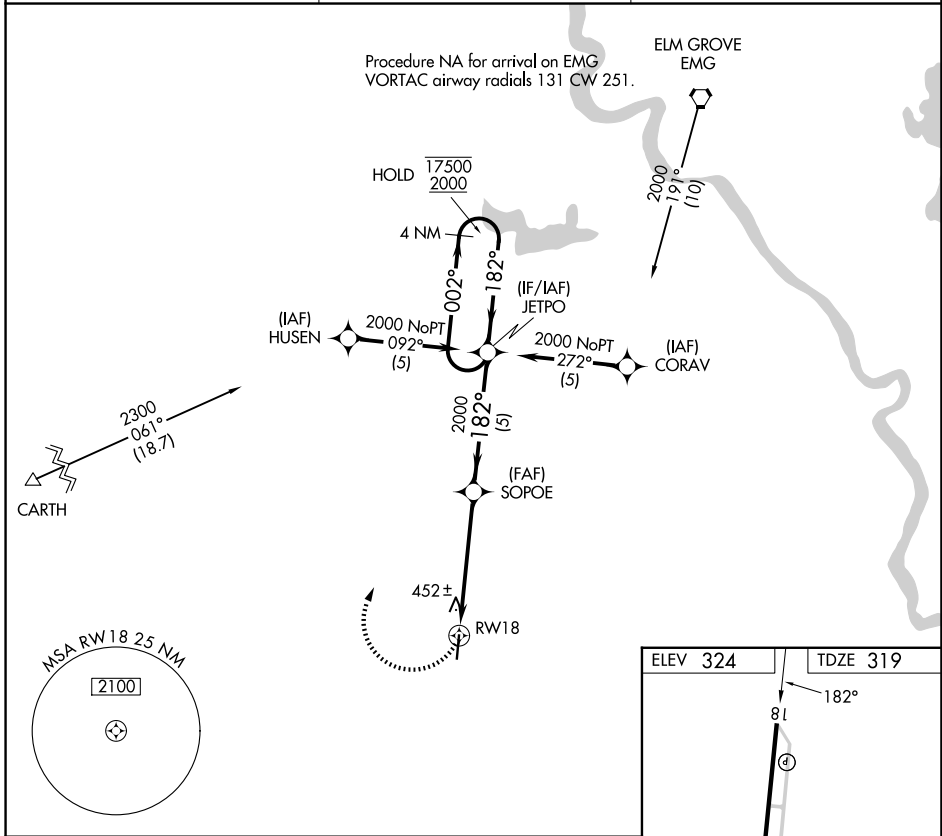
C E 'RUSTY' WILLIAMS (3F'3)

RNP APCH - GPS

Procedure NA at night. Rwy 18 helicopter visibility reduction below 1 SM NA.
 When local altimeter setting not received, use SHV altimeter setting and increase all MDAs 80 feet and LNAV visibility Cat C ¼ SM and Circling visibility Cat C ½ SM.

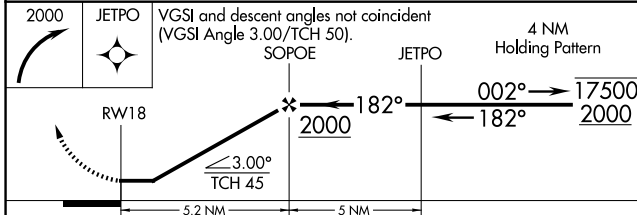
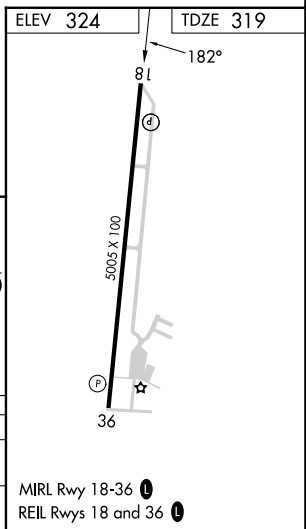
MISSED APPROACH: Climbing right turn to 2000 direct JETPO and hold.

AWOS-3PT 119.125	SHREVEPORT APP CON ★ 119.9 335.55	UNICOM 122.8 (CTAF) 0
----------------------------	---	---------------------------------



SC-4, 14 MAY 2026 to 11 JUN 2026

SC-4, 14 MAY 2026 to 11 JUN 2026



CATEGORY	A	B	C	D
LNAV MDA	780-1 461 (500-1)		780-1 ³ / ₈ 461 (500-1 ³ / ₈)	NA
CIRCLING	880-1 556 (600-1)		920-1 ¹ / ₂ 596 (600-1 ¹ / ₂)	NA