

WAAS CH <b>86514</b> <b>W09A</b>	APP CRS <b>095°</b>	Rwy Idg <b>4502</b> TDZE <b>760</b> Apt Elev <b>763</b>
--	------------------------	---

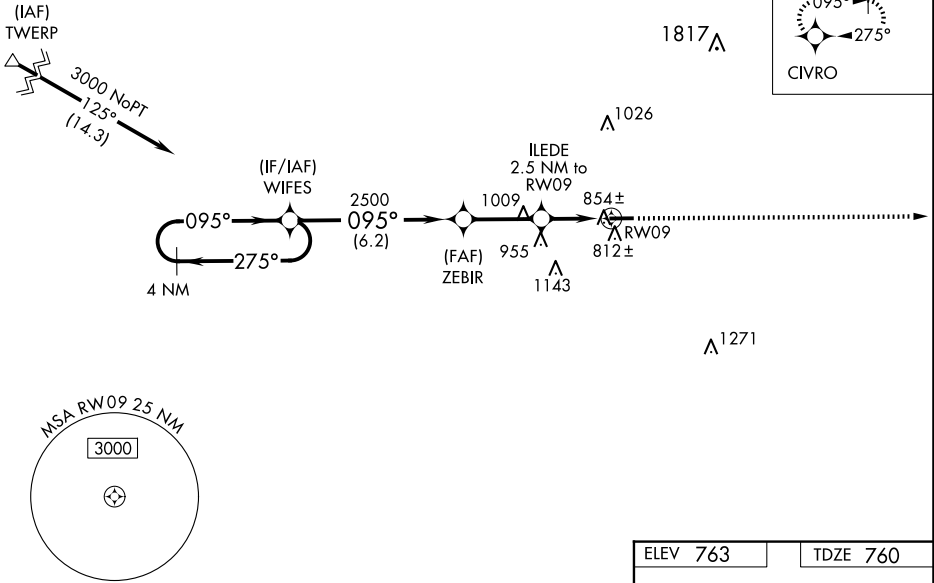
# RNAV (GPS) RWY 9

PUTNAM COUNTY (OWX)

RNP APCH.	For uncompensated Baro-VNAV systems, LNAV/VNAV NA below -16°C or above 54°C. Rwy 9 helicopter visibility reduction below 3/4 SM NA. Baro-VNAV and VDP NA when using Findlay altimeter setting. When local altimeter setting not received, use Findlay altimeter setting and increase all DAs/MDAs 40 feet.	MISSED APPROACH: Climb to 3000 direct CIVRO and hold.
-----------	---	--

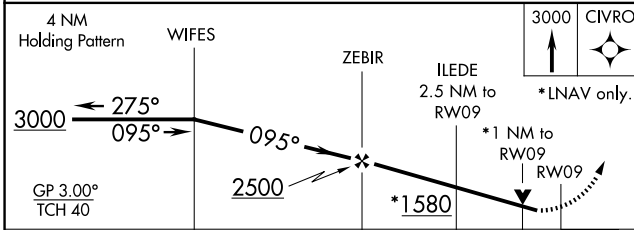
AWOS-3 <b>120.525</b>	TOLEDO APP CON <b>120.8 317.55</b>	UNICOM <b>122.7 (CTAF) 0</b>
--------------------------	---------------------------------------	---------------------------------

Procedure NA for arrivals at TWERP on V8-422 westbound.



EC-2, 14 MAY 2026 to 11 JUN 2026

EC-2, 14 MAY 2026 to 11 JUN 2026



CATEGORY	A	B	C	D
LPV DA	1048-1	288 (300-1)		NA
LNAV/ VNAV DA	1147-1 1/2	387 (400-1 1/2)		NA
LNAV MDA	1120-1	360 (400-1)		NA
CIRCLING	1200-1 437 (500-1)	1220-1 457 (500-1)		NA

ELEV 763	TDZE 760
REIL Rwy 9 and 27 0	
MIRL Rwy 9-27 0	