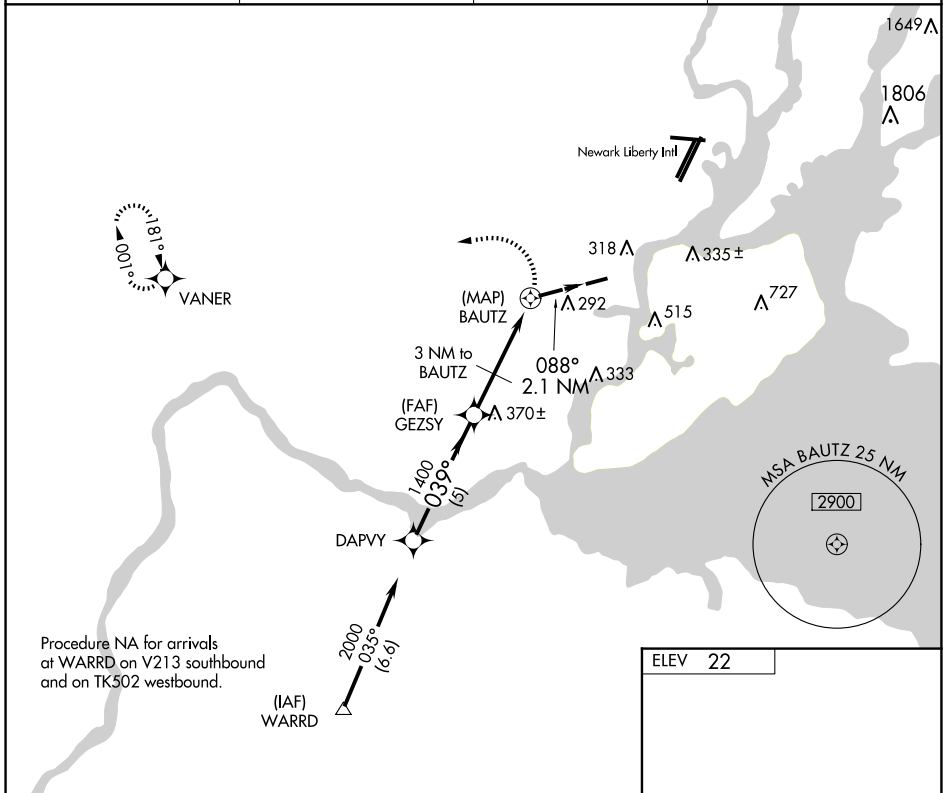


APP CRS <b>039°</b>	Rwy Idg TDZE Apt Elev	<b>N/A</b> <b>N/A</b> <b>22</b>
------------------------	-----------------------------	---------------------------------------

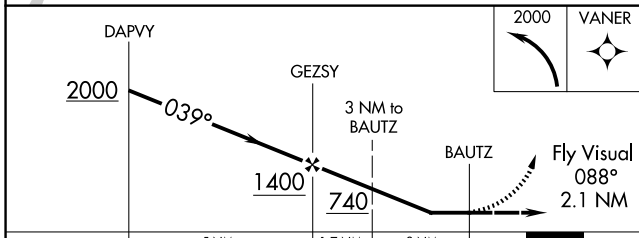
**GPS-A**  
LINDEN (LDJ)

RNP APCH - GPS		MISSED APPROACH: Climbing left turn to 2000 direct VANER WP and hold.	
<p>▼ When local altimeter setting not received, use Newark Liberty Intl altimeter setting. Helicopter visibility reduction below 1 SM NA. Procedure NA at night.</p> <p>▲ NA</p>			
AWOS-3 <b>124.025</b>	NEWARK APP CON <b>128.55 379.9</b>	CLNC DEL <b>127.25</b>	UNICOM <b>123.0 (CTAF) 0</b>



NE-2, 14 MAY 2026 to 11 JUN 2026

NE-2, 14 MAY 2026 to 11 JUN 2026



ELEV 22
---------

MIRL Rwy 9-27 0  
REIL Rwy 9 and 27 0

CATEGORY	A	B	C	D
CIRCLING	620-2½	598 (600-2½)	880-2½ 858 (900-2½)	NA
NEWARK ALTIMETER SETTING MINIMUMS				
CIRCLING	640-2½	618 (700-2½)	900-2½ 878 (900-2½)	NA