

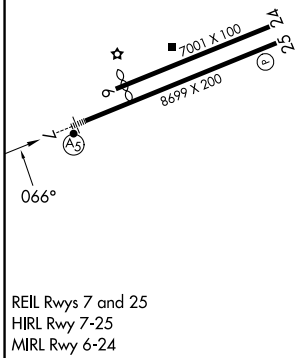
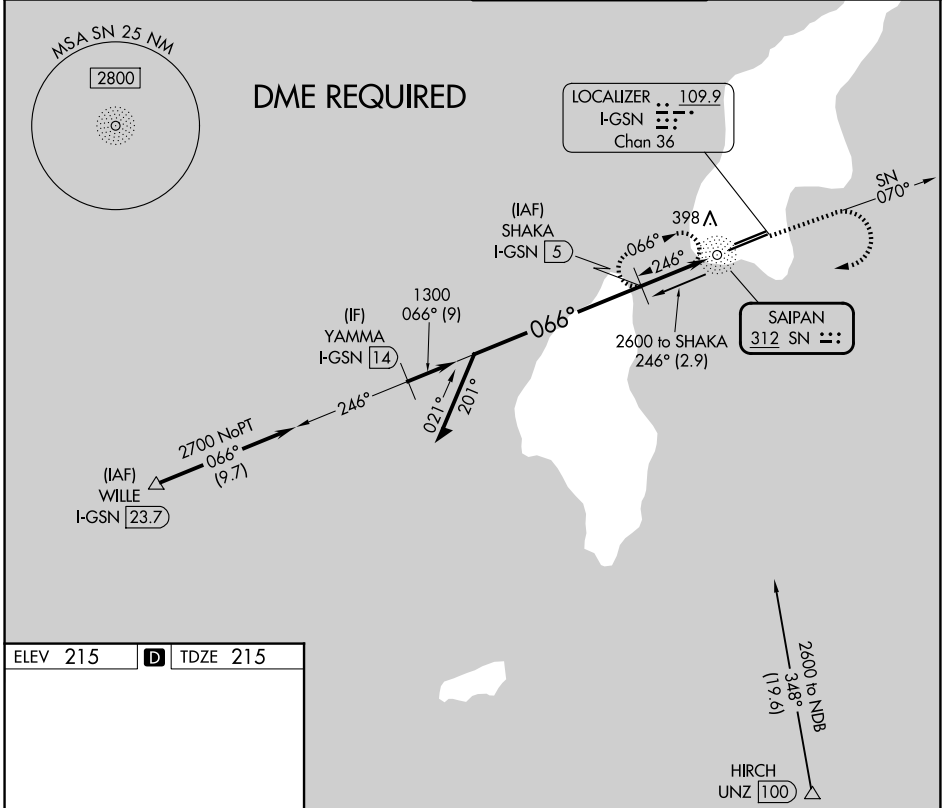
NDB SN <b>312</b>	APP CRS <b>066°</b>	Rwy Ldg TDZE Apt Elev	<b>8010</b> <b>215</b> <b>215</b>
----------------------	------------------------	-----------------------------	---

# NDB Z RWY 7

FRANCISCO C ADA/SAIPAN INTL (GSN)(PGSN)

<p>Circling NA north of Rwy 6-24. DME required.</p>	<p>MALS R</p>	<p>MISSED APPROACH: Climb to 1600 on SN NDB bearing 070° then climbing right turn to 3000 direct SN NDB then on SN NDB bearing 246° to SHAKA/I-GSN 5 DME and hold.</p>

<p>ATIS <b>127.2</b></p>	<p>GUAM CERAP <b>118.4 290.5</b></p>	<p>SAIPAN TOWER <b>125.7 256.9</b></p>	<p>GND CON <b>121.8</b></p>
------------------------------	--	--	---------------------------------



<p>Remain within 10 NM</p>	<p>SHAKA I-GSN 5</p>	<p>1600</p>	<p>3000</p>	<p>SN</p>	<p>SHAKA I-GSN 5</p>
	<p>2000</p>	<p>246°</p>	<p>SN 070°</p>	<p>SN 246°</p>	<p>SHAKA I-GSN 5</p>
<p>1300</p>	<p>066°</p>	<p>2.85° TCH 57</p>	<p>I-GSN 3</p>	<p>SN NDB I-GSN 2.1</p>	<p>SHAKA I-GSN 5</p>
		<p>2 NM</p>	<p>0.9 NM</p>	<p>0.5 NM</p>	

CATEGORY	A	B	C	D
S-7	760-3/4	545 (600-3/4)	760-1 1/8	545 (600-1 1/8)
CIRCLING	760-1	545 (600-1)	760-1 1/8	780-2 565 (600-2)

PAC. 14 MAY 2026 to 09 JUL 2026

PAC. 14 MAY 2026 to 09 JUL 2026