

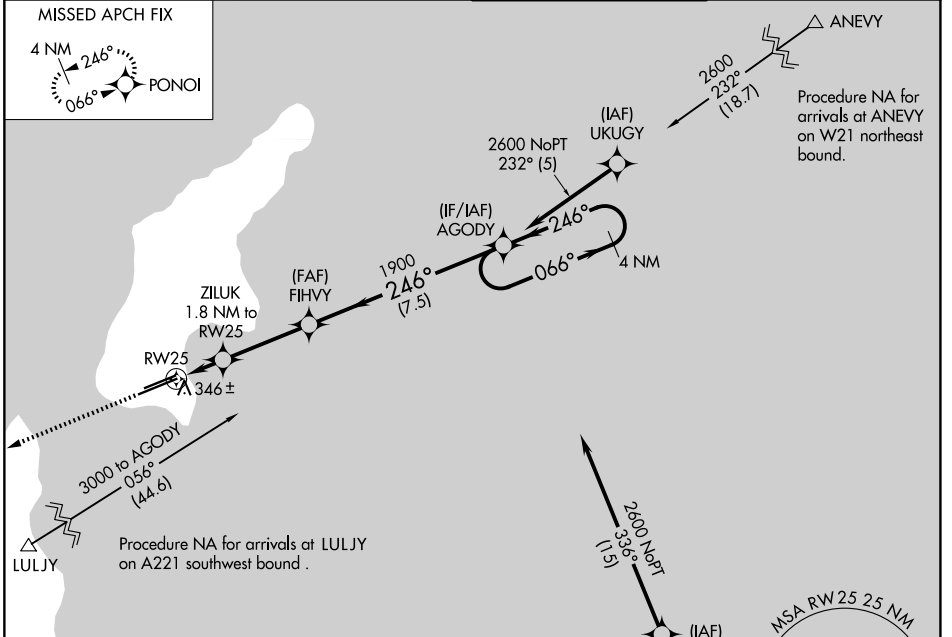
APP CRS	Rwy Ldg	8010
246°	TDZE	210
	Apt Elev	215

RNAV (GPS) RWY 25

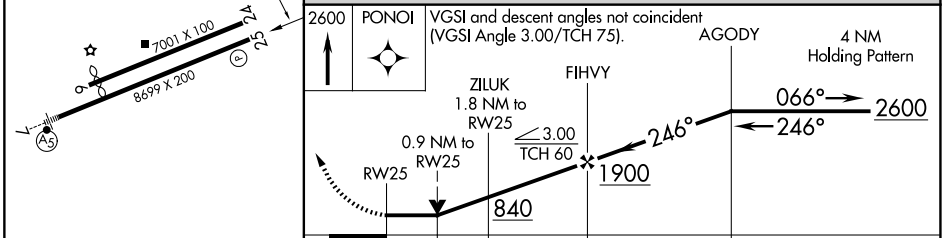
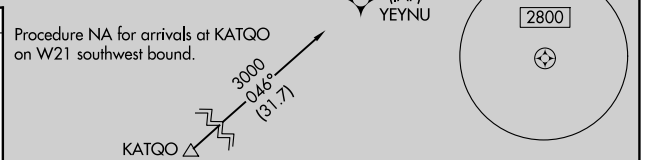
FRANCISCO C ADA/SAIPAN INTL (G5N)(PG5N)

RNP APCH - GPS.	MISSED APPROACH: Climb to 2600 direct PONOI and hold.
<p>⚠ Circling NA north of Rwy 6-24. Rwy 25 helicopter visibility reduction below ¾ NA.</p>	

ATIS 127.2	GUAM CERAP 118.4 290.5	SAIPAN TOWER 125.7 256.9	GND CON 121.8
----------------------	----------------------------------	------------------------------------	-------------------------



ELEV 215	D	TDZE 210
----------	----------	----------



CATEGORY	A	B	C	D
LNAV MDA	600-1	390 (400-1)	600-1½	390 (400-1½)
CIRCLING	720-1	505 (600-1)	720-1½	780-2
			505 (600-1½)	565 (600-2)

PAC, 14 MAY 2026 to 09 JUL 2026

PAC, 14 MAY 2026 to 09 JUL 2026