

WAAS CH 56312 W07A	APP CRS 072°	Rwy Idg TDZE Apt Elev	4703 913 913
--	------------------------	-----------------------------	---

RNAV (GPS) RWY 7

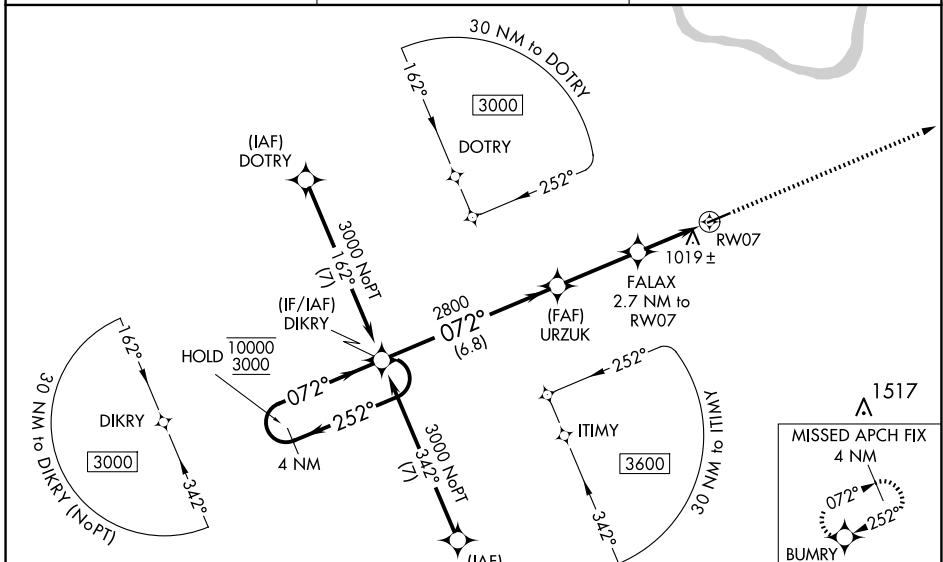
FLEMING-MASON (F'GX)

RNP APCH - GPS.

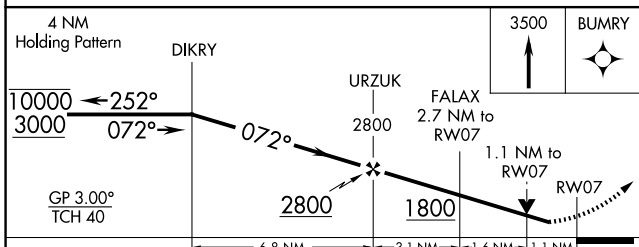
⚠ Baro-VNAV and VDP NA when using Blue Grass altimeter setting. Rwy 7 helicopter visibility reduction below 3/4 SM NA. For uncompensated Baro-VNAV systems, LNAV/VNAV NA below -16°C or above 54°C. When local altimeter setting not received, use Lexington altimeter setting and increase LPV DA to 1290 feet and all visibilities 1/4 SM; increase LNAV/VNAV DA to 1327 feet and all visibilities 1/4 SM; increase all MDAs 140 feet and LNAV visibility Cat C/D 3/8 SM.

MISSED APPROACH: Climb to 3500 direct BUMRY and hold.

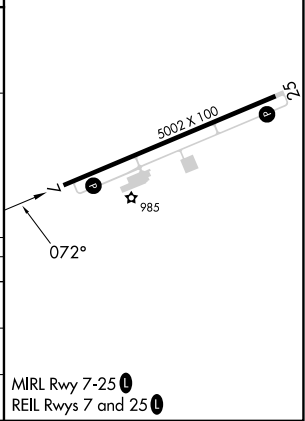
AWOS-3 118.125	INDIANAPOLIS CENTER 124.225 360.725	UNICOM 123.0(CTAF)
--------------------------	---	------------------------------



ELEV 913	D TDZE 913
----------	-------------------



CATEGORY	A	B	C	D
LPV DA		1163-3/4	250 (300-3/4)	
LNAV/VNAV DA		1200-7/8	287 (300-7/8)	
LNAV MDA		1280-1	367 (400-1)	



SE-1, 14 MAY 2026 to 11 JUN 2026

SE-1, 14 MAY 2026 to 11 JUN 2026