

WAAS CH 82335 W19A	APP CRS 189°	Rwy Ldg TDZE Apt Elev	5000 1077 1077
--	------------------------	-----------------------------	---

RNAV (GPS) RWY 19

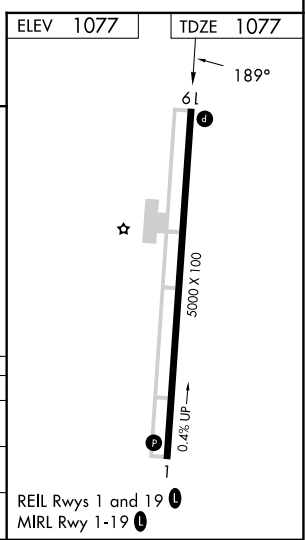
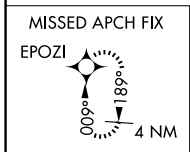
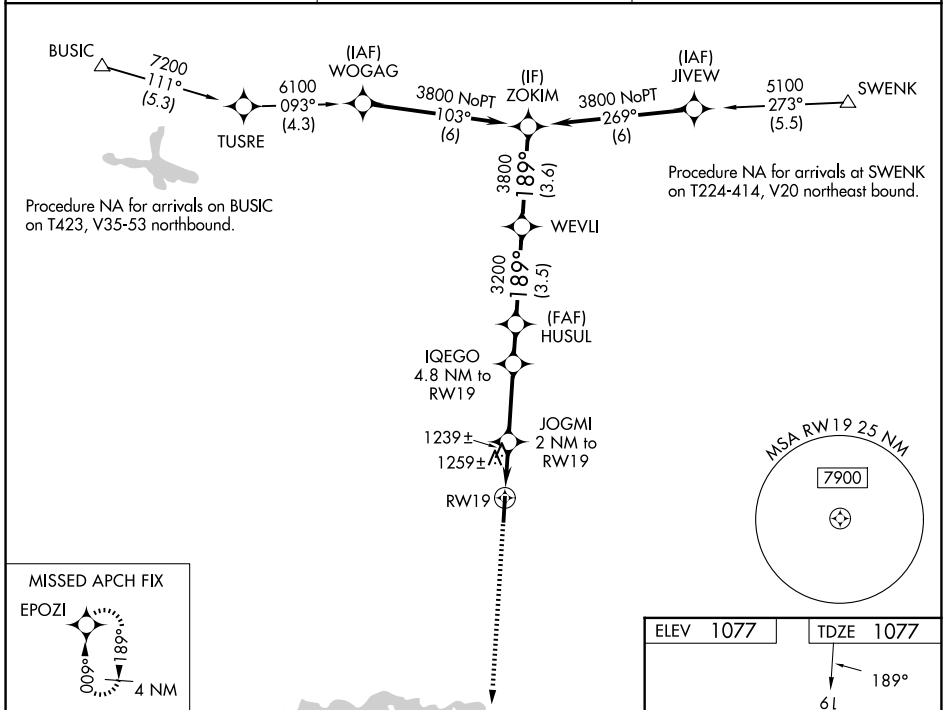
RUTHERFORD COUNTY/MARCHMAN FLD (FQD)

RNP APCH - GPS.

When local altimeter setting not received, use EHO altimeter setting and increase all MDAs 80 feet and LNAV visibility Cat C/D 1/8 SM and LP visibility Cat C/D 1/8 SM, and Circling visibility Cat C/D 1/8 SM. VDP NA when using EHO altimeter setting.

MISSED APPROACH:
Climb to 3000 direct EPOZI and hold.

AWOS-3 118,275	GREER APP CON * 119.4 350.2	UNICOM 122.8 (CTAF) 0
--------------------------	---------------------------------------	---------------------------------



3000	EPOZI				
		IQEGO 4.8 NM to RW19	HUSUL	WEVLI	ZOKIM
		JOGMI 2 NM to RW19			
		1.1 NM to RW19	0.9	2.8 NM	1.4 NM
		1780	2720	3200	3800
		3.15°	TCH 40		
		1.1	0.9	2.8	1.4
		A	B	C	D
LP	MDA	1500-1	423 (500-1)	1500-1¼	423 (500-1¼)
LNAV	MDA	1520-1	443 (500-1)	1520-1¾	443 (500-1¾)
CIRCLING		1560-1	1620-1	1660-1½	1820-2½
		483 (500-1)	543 (600-1)	583 (600-1½)	743 (800-2½)

SE-2, 14 MAY 2026 to 11 JUN 2026

SE-2, 14 MAY 2026 to 11 JUN 2026