

WAAS CH <b>50333</b> <b>W01A</b>	APP CRS <b>013°</b>	Rwy Ldg TDZE Apt Elev	<b>3200</b> <b>857</b> <b>858</b>
--	------------------------	-----------------------------	---

# RNAV (GPS) RWY 1

KEWANEE MUNI (EZI)

RNP APCH - GPS.

**▼** Baro-VNAV NA. Use GBG altimeter setting; when not received, use MLI altimeter setting and increase LPV DA to 1212 feet; increase LNAV/VNAV DA to 1242 feet and all visibilities 1/8 SM. Increase all MDAs 40 feet; and Circling visibility Cat C 1/4 SM.

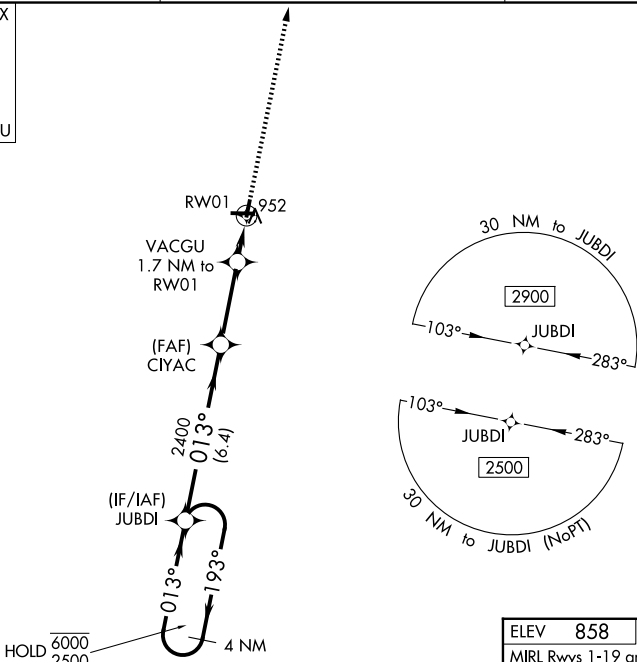
**MISSED APPROACH:**  
Climb to 2400 direct YABYU and hold.

GBG AWOS-3  
**118.975**

QUAD CITY APP CON★  
**133.275 257.8**

UNICOM  
**122.8 (CTAF) 0**

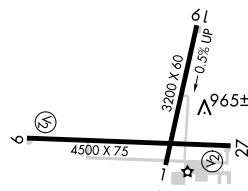
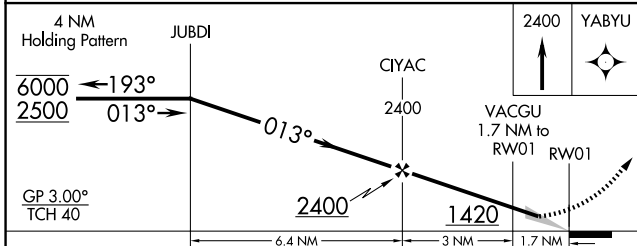
MISSED APCH FIX



EC-3, 14 MAY 2026 to 11 JUN 2026

EC-3, 14 MAY 2026 to 11 JUN 2026

ELEV <b>858</b>	TDZE <b>857</b>
MIRL Rwy 1-19 and 9-27 <b>0</b>	



CATEGORY	A	B	C	D
LPV DA	1182-1	325 (400-1)		NA
LNAV/VNAV DA	1212-1	355 (400-1)		NA
LNAV MDA	1300-1	443 (500-1)	1300-1 1/8 443 (500-1 1/8)	NA
CIRCLING	1340-1 482 (500-1)	1520-1 662 (700-1)	1520-1 1/4 662 (700-1 1/4)	NA