

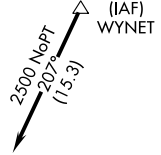
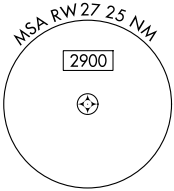
WAAS CH 56433 W27A	APP CRS 273°	Rwy Ldg TDZE Apt Elev	4500 858 858
--	------------------------	-----------------------------	---

RNAV (GPS) RWY 27

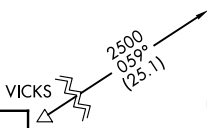
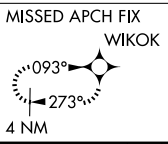
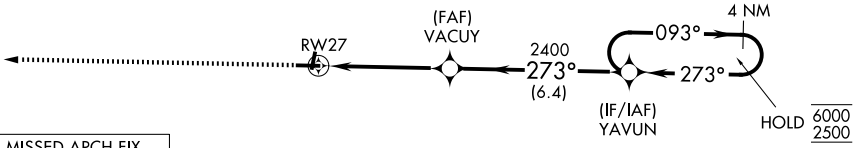
KEWANEE MUNI (EZI)

RNP APCH - GPS.	<p>Baro-VNAV NA. Use GBG altimeter setting; when not received use MLI altimeter setting and increase LPV DA to 1213 feet, LNAV/VNAV DA to 1242 feet and all visibilities 1/8 SM; increase all MDAs 40 feet and LNAV visibility Cat C 1/8 SM, and Circling visibility Cat C 1/4 SM.</p>	<p>MISSED APPROACH: Climb to 2500 direct WIKOK and hold.</p>
-----------------	--	--

GBG AWOS-3 118.975	QUAD CITY APP CON* 133.275 257.8	UNICOM 122.8 (CTAF) 0
------------------------------	--	---------------------------------

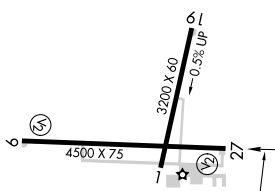
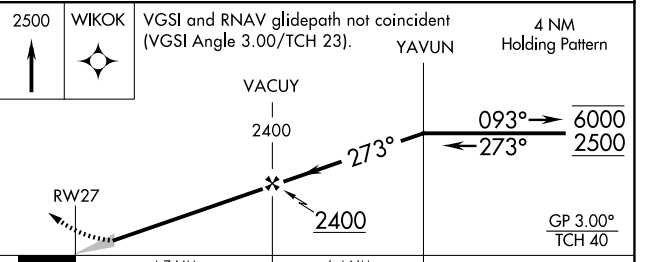


Procedure NA for arrivals at WYNET on V8 and V38 eastbound.



Procedure NA for arrivals at VICKS on V434 northwest bound and V10 southeast bound.

ELEV 858	TDZE 858
----------	----------



CATEGORY	A	B	C	D
LPV DA	1183-1 325 (400-1)			NA
LNAV/VNAV DA	1212-1 354 (400-1)			NA
LNAV MDA	1380-1	522 (600-1)	1380-1 1/2 522 (600-1 1/2)	NA
CIRCLING	1380-1 522 (600-1)	1520-1 662 (700-1)	1520-1 3/4 662 (700-1 3/4)	NA

MIRL Rwy 1-19 and 9-27 0

EC-3, 14 MAY 2026 to 11 JUN 2026

EC-3, 14 MAY 2026 to 11 JUN 2026