

VOR/DME RWF 113.3 Chan 80	APP CRS 005°	Rwy Ldg TDZE Apt Elev 1080	N/A N/A 1080
---	------------------------	--------------------------------------	---------------------------

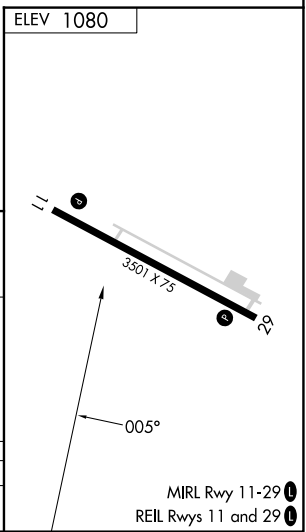
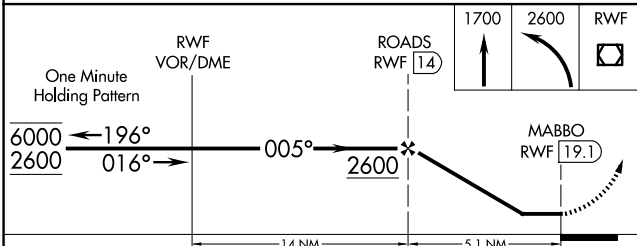
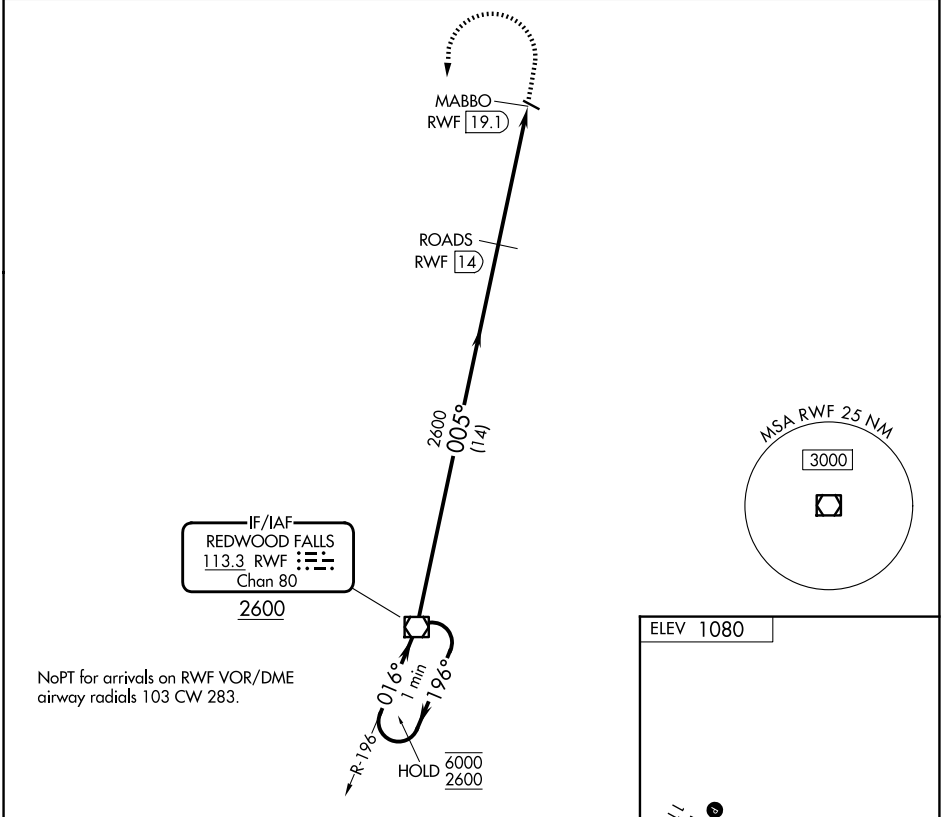
VOR-A
OLIVIA RGNL (OVL)

DME required.

▼ Procedure NA at night. Helicopter visibility reduction below 1 SM NA.
▲ When local altimeter setting not received, use RWF altimeter setting and increase all MDA 40 feet and visibility Cat C/D ¼ SM.

MISSED APPROACH: Climb to 1700 then climbing left turn to 2600 direct RWF VOR/DME and hold.

AWOS-3 119.275	MINNEAPOLIS CENTER 127.1 290.2	UNICOM 122.8 (CTAF) 0
--------------------------	--	---------------------------------



CATEGORY	A	B	C	D
CIRCLING	1620-1	540 (600-1)	1720-1¾ 640 (700-1¾)	1720-2 640 (700-2)

NC-1, 14 MAY 2026 to 11 JUN 2026

NC-1, 14 MAY 2026 to 11 JUN 2026