

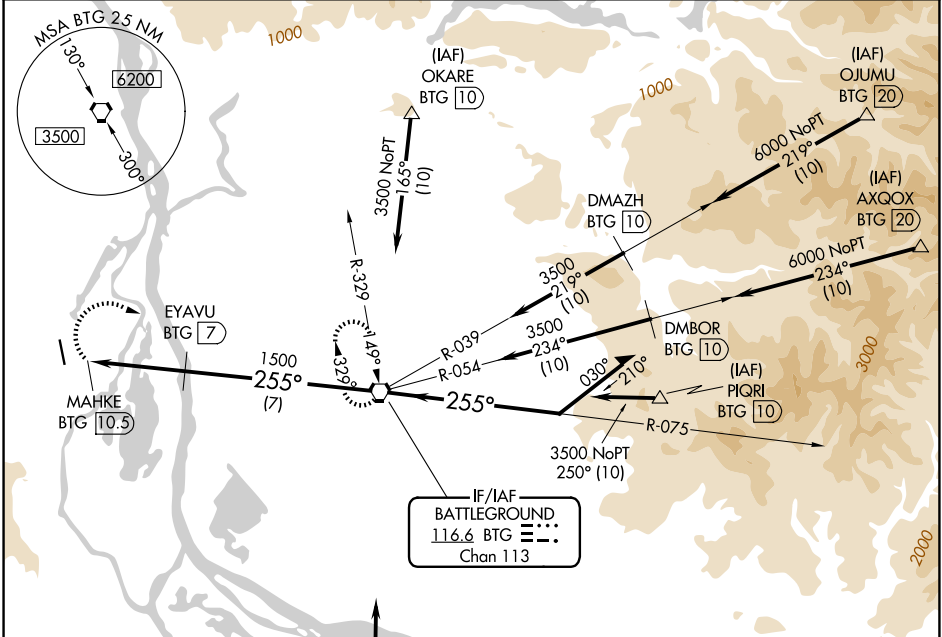
VORTAC BTG <b>116.6</b> Chan <b>113</b>	APP CRS <b>255°</b>	Rwy Ldg TDZE Apt Elev <b>N/A</b> <b>N/A</b> <b>58</b>
---	------------------------	--

# VOR/DME-A SCAPOOSE (SPB)

**⚠** Circling to Rwy 15 NA at night. Circling NA west of Rwy 15-33. When local altimeter setting not received, use Portland Intl altimeter setting; increase all MDAs 40 feet. Increase Circling Cat D visibility ¼ SM.

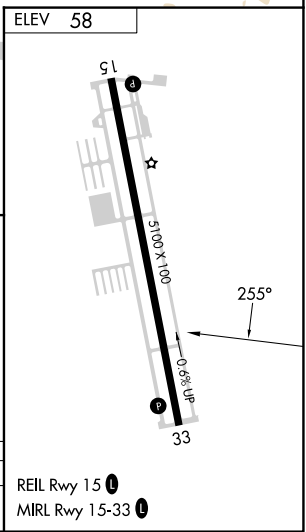
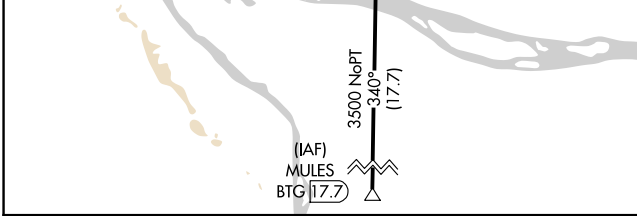
**MISSED APPROACH:** Climbing right turn to 4200 direct BTG VORTAC and hold, continue climb-in-hold to 4200.

ASOS <b>135.875</b>	PORTLAND APP CON <b>124.35 299.2</b>	CLNC DEL <b>121.65</b>	UNICOM <b>122.8</b> (CTAF) <b>📻</b>
------------------------	---	---------------------------	--



NW-1, 14 MAY 2026 to 11 JUN 2026

NW-1, 14 MAY 2026 to 11 JUN 2026



4200	BTG		
MAHKE BTG 10.5	EYAVU BTG 7	BTG VORTAC	Remain within 10 NM
1500	3500	5600	
0.8	3.5 NM	7 NM	

CATEGORY	A	B	C	D
CIRCLING	660-1	602 (700-1)	660-1¾ 602 (700-1¾)	860-2½ 802 (900-2½)

REIL Rwy 15 **📻**  
MIRL Rwy 15-33 **📻**