

WAAS CH 58203 W18A	APP CRS 179°	Rwy Ldg TDZE 686 Apt Elev 691	4002
--	------------------------	---	-------------

RNAV (GPS) RWY 18

LITCHFIELD MUNI (3LF)

RNP APCH - GPS.

⚠ Baro-VNAV and VDP NA when using Taylorville altimeter setting. Rwy 18 helicopter visibility reduction below $\frac{3}{4}$ SM NA. For uncompensated Baro-VNAV systems, LNAV/VNAV NA below -16°C or above 54°C. When local altimeter setting not received, use Taylorville altimeter setting and increase LPV DA to 1025 feet and all visibilities $\frac{1}{8}$ SM, increase LNAV/VNAV DA to 1146 feet and all visibilities $\frac{1}{4}$ SM, increase all MDAs 80 feet and LNAV visibility Cat C $\frac{1}{8}$ SM.

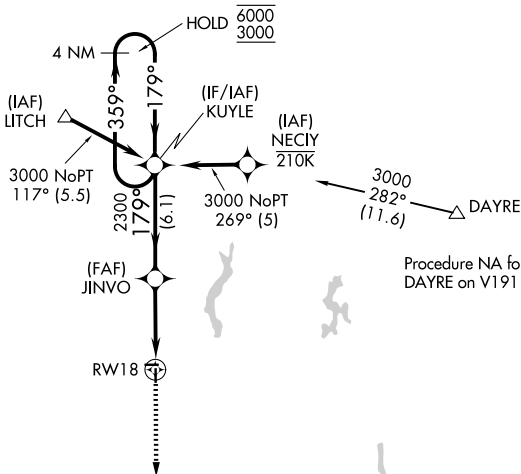
MISSED APPROACH: Climb to 3000 direct OREPE and hold.

AWOS-3PT
118.175

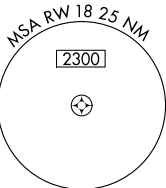
ST. LOUIS APP CON
124.2 353.9

UNICOM
122.8 (CTAF) 0

Procedure NA for arrivals at LITCH on V69 northeast bound.



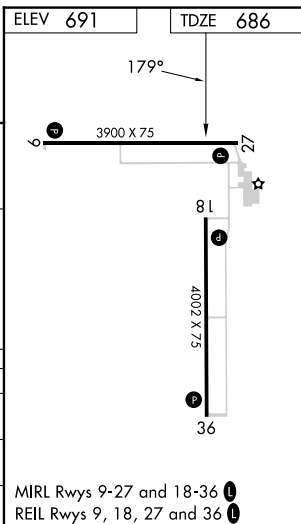
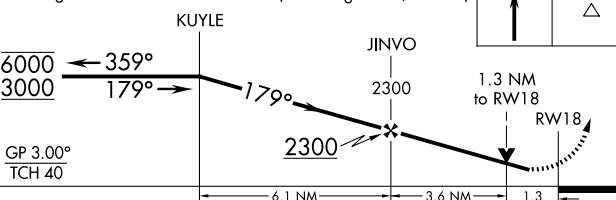
Procedure NA for arrivals at DAYRE on V191 northeast bound.



4 NM Holding Pattern

VGSI and RNAV glidepath not coincident (VGSI Angle 3.00/TCH 23).

3000 OREPE



CATEGORY	A	B	C	D
LPV DA	952- $\frac{7}{8}$ 266 (300- $\frac{7}{8}$)			NA
LNAV/VNAV DA	1073-1 $\frac{1}{8}$ 387 (400-1 $\frac{1}{8}$)			NA
LNAV MDA	1120-1 434 (500-1)		1120-1 $\frac{1}{4}$ 434 (500-1 $\frac{1}{4}$)	

MIRL Rwy 9-27 and 18-36
REIL Rwy 9, 18, 27 and 36

EC-3, 14 MAY 2026 to 11 JUN 2026

EC-3, 14 MAY 2026 to 11 JUN 2026