

APP CRS	Rwy Ldg	3900
269°	TDZE	691
	Apt Elev	691

RNAV (GPS) RWY 27

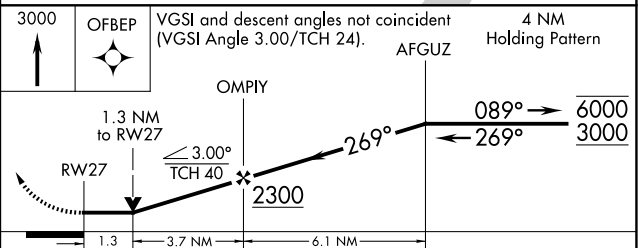
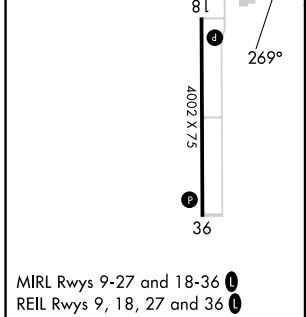
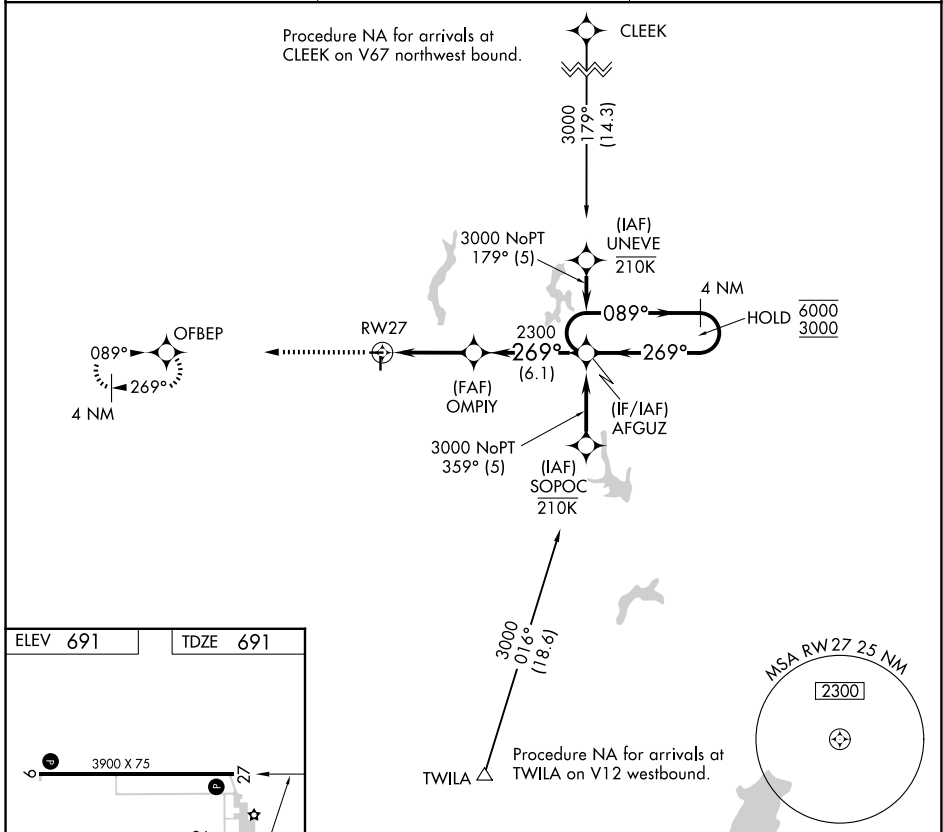
LITCHFIELD MUNI (3LF)

RNP APCH - GPS.

⚠ Rwy 27 helicopter visibility reduction below 3/4 SM NA. When local altimeter setting not received, use Taylorville altimeter setting and increase all MDA 80 feet and LNAV Cat C visibility 1/8 SM. VDP NA when using Taylorville altimeter setting.

MISSED APPROACH: Climb to 3000 direct OFBEP and hold.

AWOS-3PT 118.175	ST. LOUIS APP CON 124.2 353.9	UNICOM 122.8 (CTAF) 0
----------------------------	---	---------------------------------



CATEGORY	A	B	C	D
LNAV MDA	1120-1	429 (500-1)	1120-1 1/4 429 (500-1 1/4)	NA

EC-3, 14 MAY 2026 to 11 JUN 2026

EC-3, 14 MAY 2026 to 11 JUN 2026