

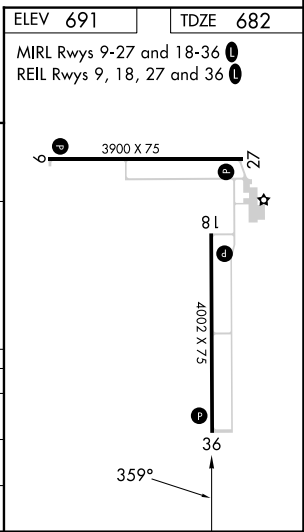
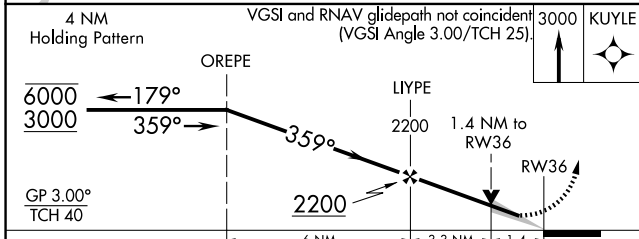
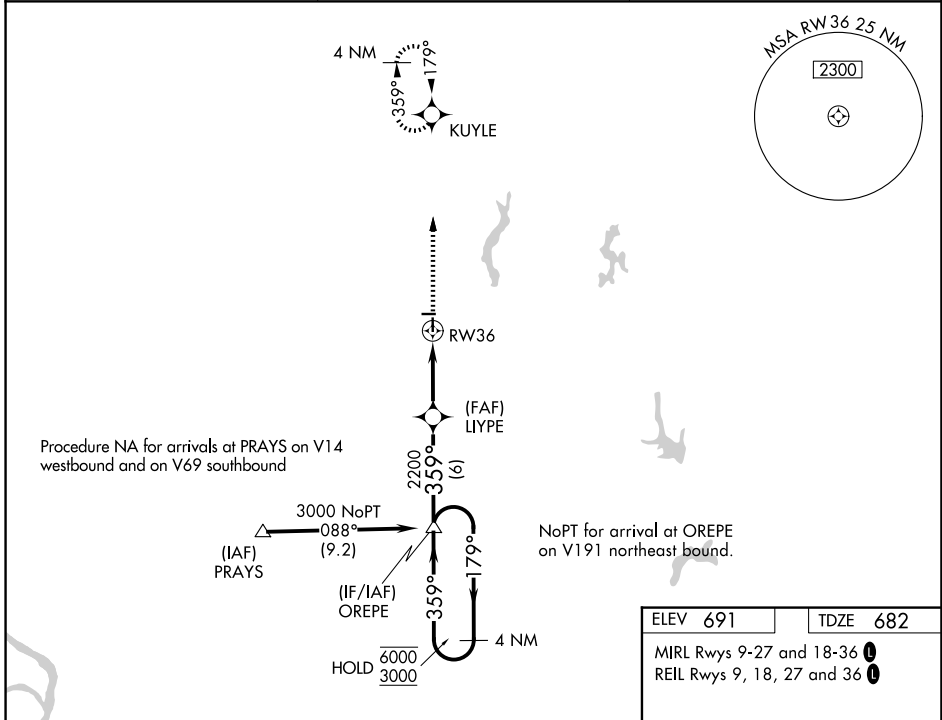
| | | |
|--|------------------------|---|
| WAAS CH 40403 W36A | APP CRS 359° | Rwy Ldg 4002 TDZE 682 Apt Elev 691 |
|--|------------------------|---|

RNAV (GPS) RWY 36

LITCHFIELD MUNI (3LF)

| | |
|---|---|
| RNP APCH - GPS. | <p>MISSED APPROACH: Climb to 3000 direct KUYLE and hold.</p> |
| <p>Baro-VNAV and VDP NA when using Taylorville altimeter setting. For uncompensated Baro-VNAV systems, LNAV/VNAV NA below -1.6°C or above 54°C. When local altimeter setting not received, use Taylorville altimeter setting and increase LPV DA to 1005 feet and all visibilities ¼ SM, increase LNAV/VNAV DA to 1145 and all visibilities ¼ SM; increase all MDAs 80 feet and increase LNAV Cat C visibility ½ SM.</p> | |

| | | |
|----------------------------|---|---------------------------------|
| AWOS-3PT 118.175 | ST. LOUIS APP CON 124.2 353.9 | UNICOM 122.8 (CTAF) 0 |
|----------------------------|---|---------------------------------|



| CATEGORY | A | B | C | D |
|--------------|----------------------|---|----------------------|----|
| LPV DA | 932-¾ 250 (300-¾) | | | NA |
| LNAV/VNAV DA | 1072-1½ 390 (400-1½) | | | NA |
| LNAV MDA | 1140-1 458 (500-1) | | 1140-1¾ 458 (500-1¾) | |

EC-3, 14 MAY 2026 to 11 JUN 2026

EC-3, 14 MAY 2026 to 11 JUN 2026