

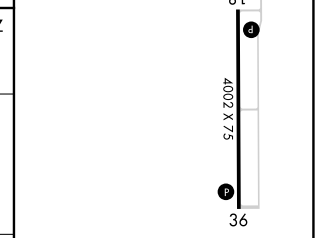
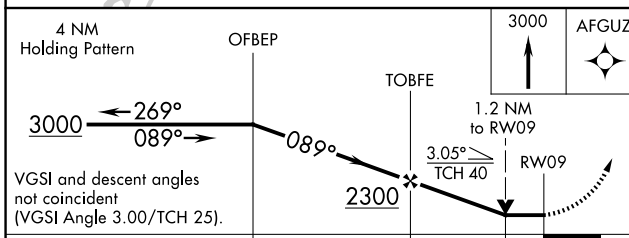
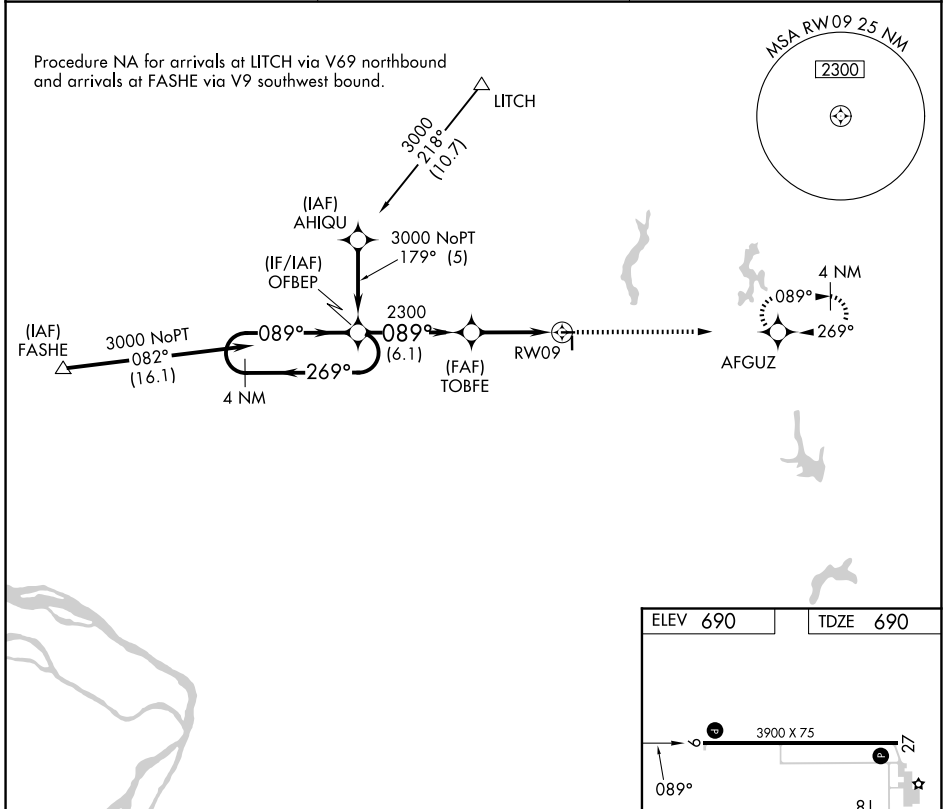
| | | |
|-------------|----------|-------------|
| APP CRS | Rwy Ldg | 3900 |
| 089° | TDZE | 690 |
| | Apt Elev | 690 |

RNAV (GPS) RWY 9

LITCHFIELD MUNI (3LF)

| | | |
|-----------|---|---|
| RNP APCH. | <p>⚠ When local altimeter setting not received, use Taylorville altimeter setting and increase all MDA 80 feet and LNAV Cat C visibility to 1½ SM. VDP NA with Taylorville altimeter setting. Rwy 9 helicopter visibility reduction below ¾ SM NA.</p> | MISSED APPROACH: Climb to 3000 direct AFGUZ and hold. |
|-----------|---|---|

| | | |
|----------------------------|---|---------------------------------|
| AWOS-3PT 118.175 | ST. LOUIS APP CON 124.2 353.9 | UNICOM 122.8 (CTAF) 0 |
|----------------------------|---|---------------------------------|



| | | | | |
|----------|--------|-------------|-------------------------------|----|
| CATEGORY | A | B | C | D |
| LNAV MDA | 1140-1 | 450 (500-1) | 1140-1 3/8 450 (500-1 3/8) | NA |

MIRL Rwy 9-27 and 18-36
 REIL Rwy 9, 18, 27 and 36

EC-3, 14 MAY 2026 to 11 JUN 2026

EC-3, 14 MAY 2026 to 11 JUN 2026