

APP CRS 347°	Rwy Idg 3084
	TDZE 574
	Apt Elev 574

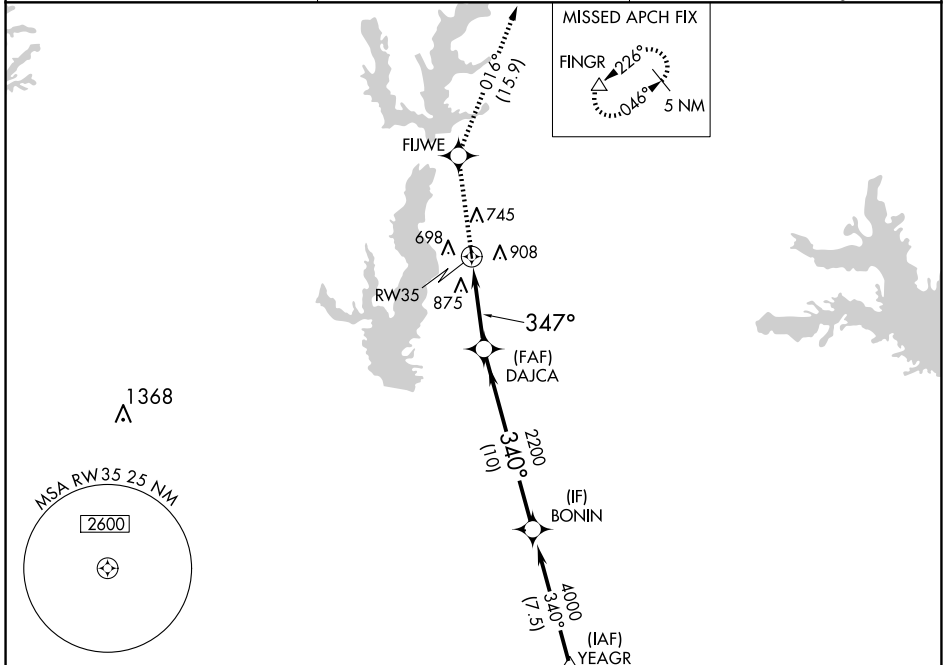
RNAV (GPS) RWY 35

RALPH M HALL/ROCKWALL MUNI (F46)

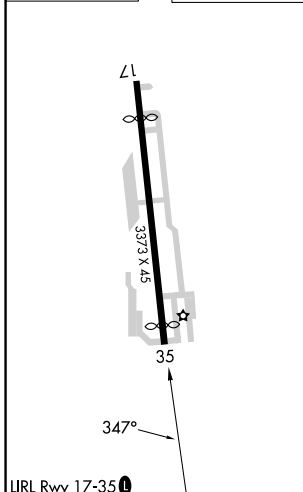
⚠ DME/DME RNP-0.3 NA. When local altimeter setting not received, use Dallas Love Fld altimeter setting and increase all MDA 80 feet.
⚠ Helicopter visibility reduction below 1 SM NA. Procedure NA at night.

MISSED APPROACH: Climb to 5000 direct FIJWE and on track 016° to FINGR and hold.

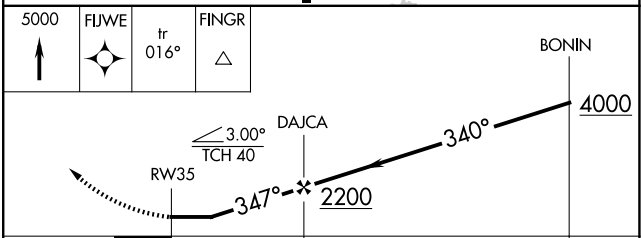
AWOS-3PT 121.25	LONE STAR APP CON 124.3 282.275	UNICOM 122.8 (CTAF) ①
---------------------------	---	---------------------------------



ELEV 574	TDZE 574
----------	----------



5000	FIJWE	tr 016°	FINGR
------	-------	---------	-------



CATEGORY	A	B	C	D
LNAV MDA	1200-1	626 (700-1)	NA	
CIRCLING	1280-1	706 (800-1)	NA	

SC-2, 14 MAY 2026 to 11 JUN 2026

SC-2, 14 MAY 2026 to 11 JUN 2026