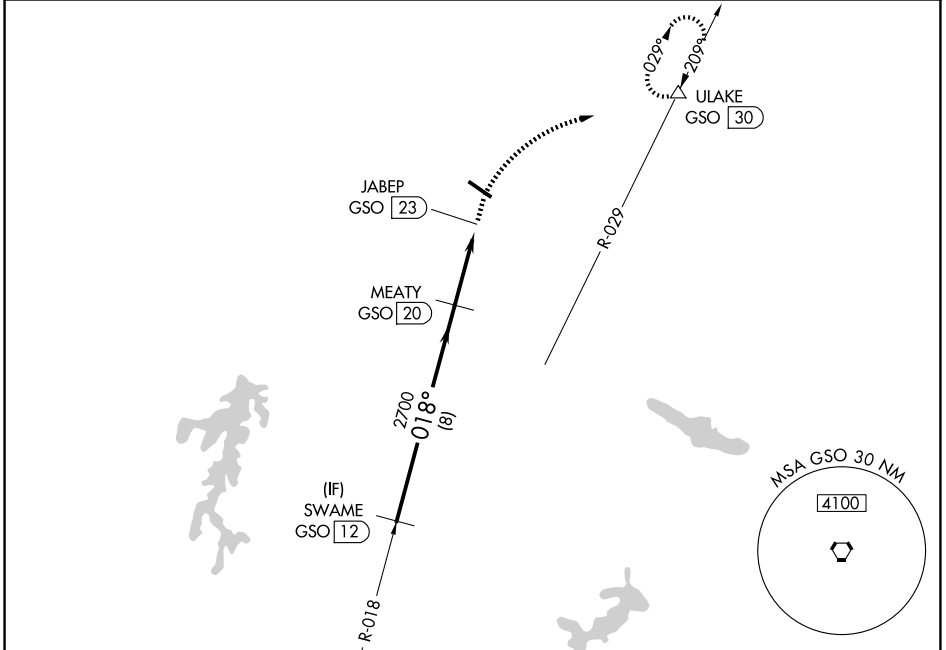


VORTAC GSO 116.2 Chan 109	APP CRS 018°	Rwy Ldg TDZE Apt Elev N/A N/A 694
---	------------------------	--

VOR-A
ROCKINGHAM COUNTY NC SHILOH (SIF')

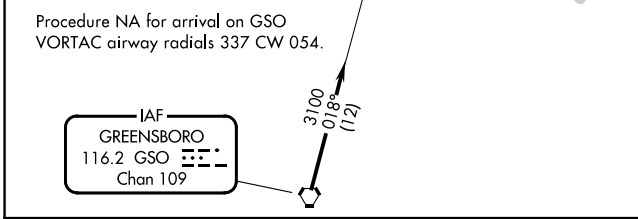
DME required. MISSED APPROACH: Climb to 1300 then climbing right turn to 3100 on heading 077° and GSO VORTAC R-029 to ULAKE/GSO 30 DME and hold, continue climb-in-hold to 3100.

AWOS-3 119.775	GREENSBORO APP CON 124.35 269.225	UNICOM 122.8 (CTAF) ①
--------------------------	---	---------------------------------

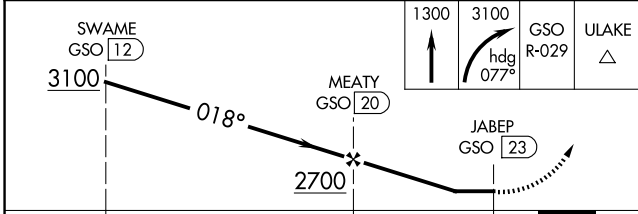
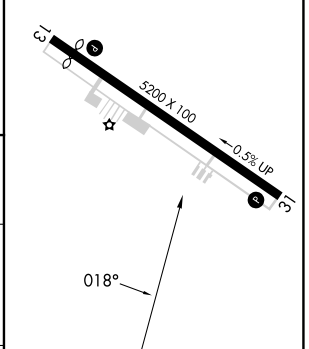


SE-2, 14 MAY 2026 to 11 JUN 2026

SE-2, 14 MAY 2026 to 11 JUN 2026



ELEV 694
REIL Rwy 13 and 31 ①
HIRL Rwy 13-31 ①



CATEGORY	A	B	C	D	FAF to MAP 3 NM					
CIRCLING	1280-1½ 586 (600-1½)	1340-1½ 646 (700-1½)	1340-1¾ 646 (700-1¾)	1440-2½ 746 (800-2½)	Knots	60	90	120	150	180
					Min:Sec	3:00	2:00	1:30	1:12	1:00