

APP CRS	Rwy Idg	<b>4206</b>
<b>282°</b>	TDZE	<b>665</b>
	Apt Elev	<b>665</b>

# RNAV (GPS) RWY 28

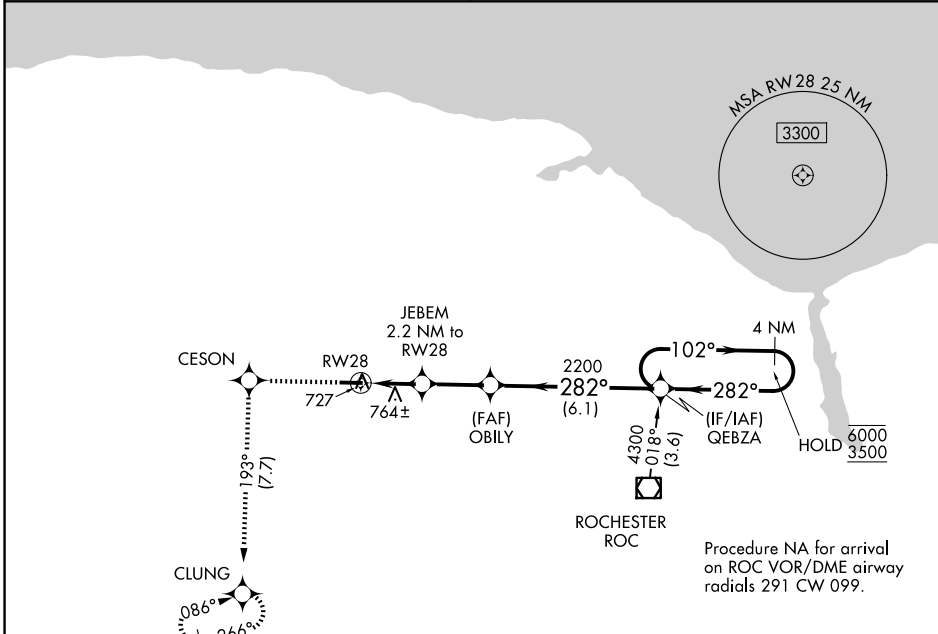
LEDGEDALE AIRPARK (7G0)

RNP APCH.  
 ▼ Rwy 28 helicopter visibility reduction below 1 SM NA.  
 ▲ NA Procedure NA at night.

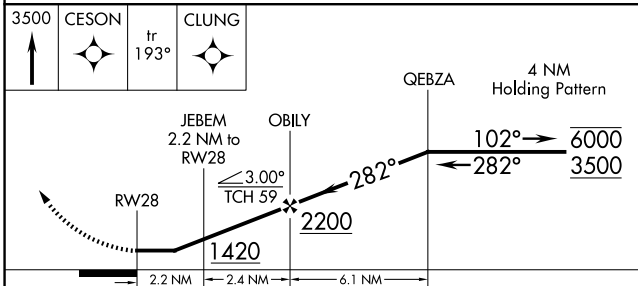
MISSED APPROACH: Climb to 3500 direct CESON and on track 193° to CLUNG and hold, continue climb-in-hold to 3500.

ROCHESTER APP CON  
**123.7 322.3**

UNICOM  
**122.7 (CTAF)**



ELEV	665	TDZE	665
------	-----	------	-----



CATEGORY	A	B	C	D
LNVA MDA	1060-1	395 (400-1)		NA
CIRCLING	1160-1	495 (500-1)		NA

