

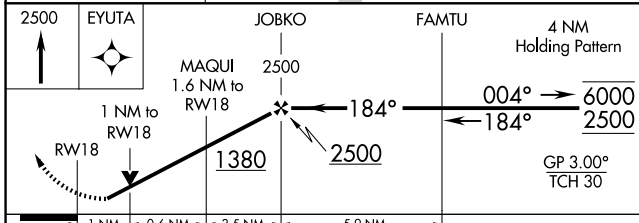
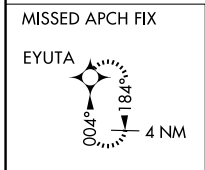
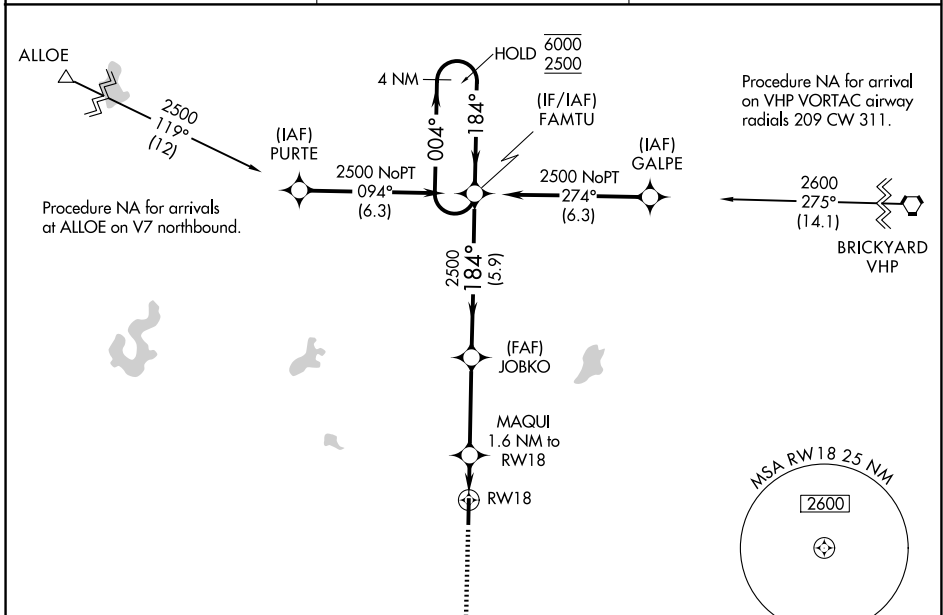
WAAS CH 86906 W18A	APP CRS 184°	Rwy Ldg 5002 TDZE 842 Apt Elev 842
--	------------------------	---

RNAV (GPS) RWY 18

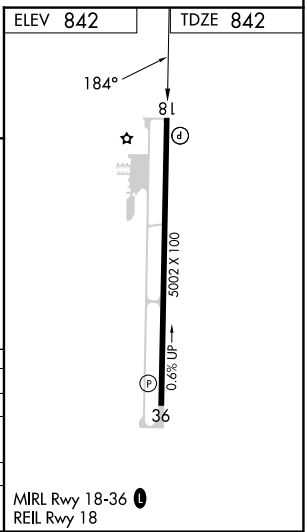
PUTNAM COUNTY RGNL (GPC)

RNP APCH - GPS.	MISSED APPROACH: Climb to 2500 direct EYUTA and hold.
<p>▼ Rwy 18 helicopter visibility reduction below 3/4 SM NA. For uncompensated ▲ Baro-VNAV systems, LNAV/VNAV NA below -16°C or above 54°C.</p>	

AWOS-3PT 118.125	INDIANAPOLIS APP CON 119.05 317.8	UNICOM 122.8 (CTAF) ①
----------------------------	---	---------------------------------



CATEGORY	A	B	C	D
LPV DA		1107-7/8	265 (300-7/8)	
LNAV/VNAV DA		1124-7/8	282 (300-7/8)	
LNAV MDA		1200-1	358 (400-1)	
CIRCLING	1280-1	1400-1	1480-1 3/4	1600-2 1/2
	438 (500-1)	558 (600-1)	638 (700-1 3/4)	758 (800-2 1/2)



EC-2, 14 MAY 2026 to 11 JUN 2026

EC-2, 14 MAY 2026 to 11 JUN 2026