

VOR/DME CHE 115.6 Chan 103	APP CRS 247°	Rwy Ldg TDZE 5606 6198 Apt Elev 6198
--	------------------------	--

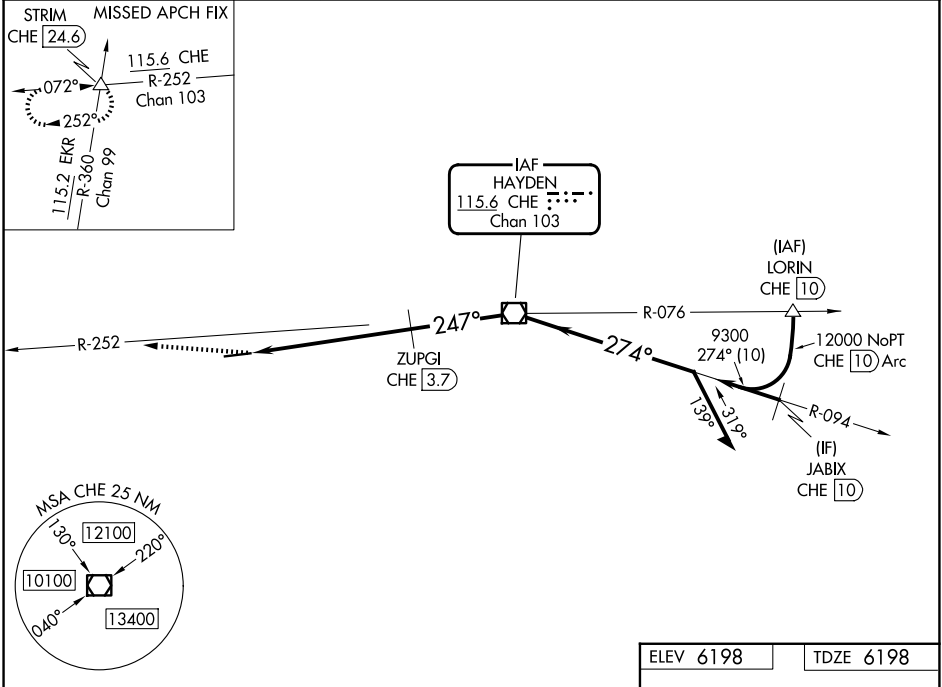
VOR RWY 25

CRAIG-MOFFAT (CAG)

⚠ Rwy 25 helicopter visibility reduction below 1 SM NA. Straight-in and Circling Rwy 25 NA at night.
❄ -27°C Circling NA for Cat D south of Rwy 7-25.

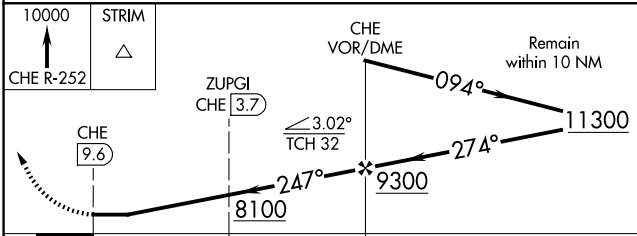
MISSED APPROACH: Climb to 10000 on CHE VOR/DME R-252 to STRIM INT/24.6 DME and hold.

ASOS 135.425	DENVER CENTER 120.475 235.975	UNICOM 122.8 (CTAF) ①
------------------------	---	---------------------------------



SW-1, 14 MAY 2026 to 11 JUN 2026

SW-1, 14 MAY 2026 to 11 JUN 2026



ELEV 6198	TDZE 6198
-----------	-----------

CATEGORY	A	B	C	D
S-25	8100-1¼ 1902 (2000-1¼)	8100-1½ 1902 (2000-1½)	8100-3	1902 (2000-3)
CIRCLING	8100-1¼ 1902 (2000-1¼)	8100-1½ 1902 (2000-1½)	8100-3	1902 (2000-3)
ZUPGI FIX MINIMUMS				
S-25	7360-1¼ 1162 (1200-1¼)	7360-1½ 1162 (1200-1½)	7360-3	1162 (1200-3)
CIRCLING	7360-1¼ 1162 (1200-1¼)	7360-1½ 1162 (1200-1½)	7360-3	1162 (1200-3)

REIL Rwy 7 and 25 ①
 MIRL Rwy 7-25 ①

FAF to MAP 9.6 NM

Knots	60	90	120	150	180
Min:Sec	9:36	6:24	4:48	3:50	3:12