

YUMA, ARIZONA

RNAV (GPS) RWY 6

APCH CRS	Rwy Idg	6043
063°	TDZE	387
	Arprt Elev	433

[USA]

LAGUNA AAF (YUMA PROVING GROUND) (KLGf)

RNP APCH - GPS

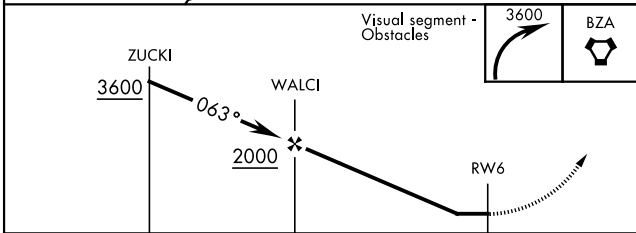
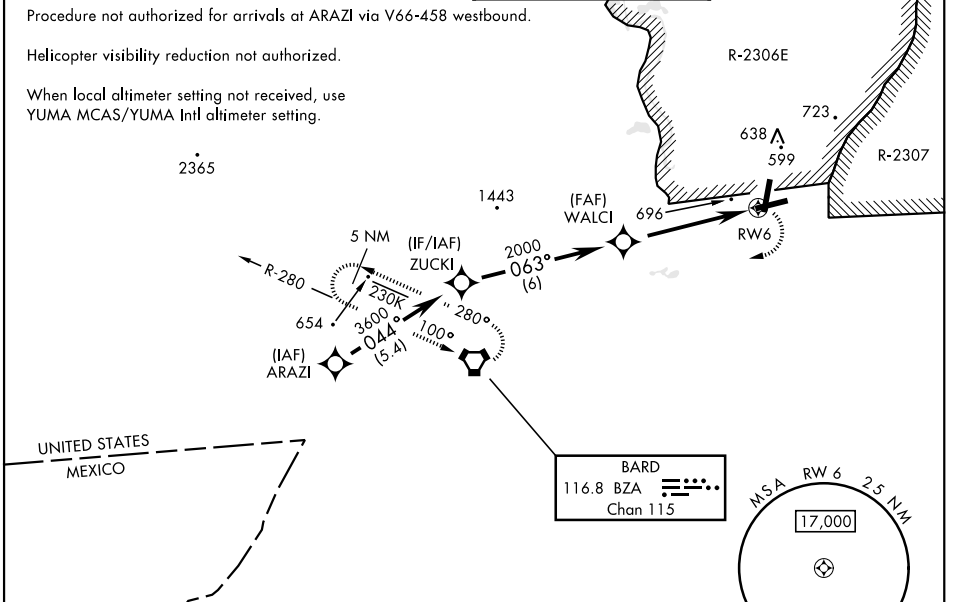
RADAR required for holding.

▼ Procedure not authorized when airfield closed.
 * Straight-in Minimums not authorized at night.
 ** Circling not authorized NW of Rwys 6 and 18.
 Circling to Rwy 24 not authorized at night.

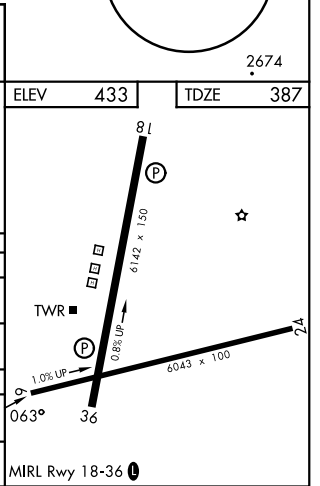
▲ NA

MISSED APPROACH: Climbing right turn to 3600 direct BZA VORTAC and hold.

ATIS 128.225	YUMA APP CON 124.7 371.975	TOWER ★ 126.2 (CTAF) 242.175	GND CON 121.8 229.4
------------------------	--------------------------------------	--	-------------------------------



CATEGORY	A	B	C	D
LNAV MDA*	1020-1 633 (600-1)	1020-1¾ 633 (600-1¾)		
CIRCLING**	1080-1 647 (700-1)	1080-1¾ 647 (700-1¾)	1080-2 647 (700-2)	
YUMA MCAS/YUMA Intl ALTIMETER SETTING				
LNAV MDA*	1100-1 713 (700-1)	1100-2 713 (700-2)		
CIRCLING**	1160-1 727 (800-1)	1160-2 727 (800-2)	1160-2½ 727 (800-2½)	



YUMA, ARIZONA
Amdt 1 05OCT23

32°52'N-114°24'W

LAGUNA AAF (YUMA PROVING GROUND) (KLGf)

RNAV (GPS) RWY 6

SW-4, 14 MAY 2026 to 11 JUN 2026

SW-4, 14 MAY 2026 to 11 JUN 2026