

YUMA, ARIZONA

VOR RWY 6

VORTAC BZA 116.8 Chan 115	APCH CRS 048°	Rwy Idg TDZE Arprt Elev 6043 387 433
---	-------------------------	--

[USA]

LAGUNA AAF (YUMA PROVING GROUND) (KLGf)

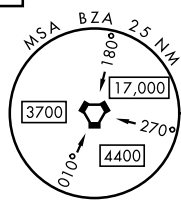
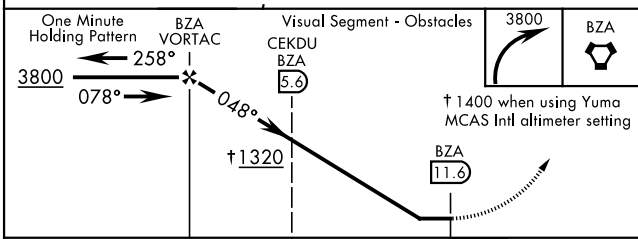
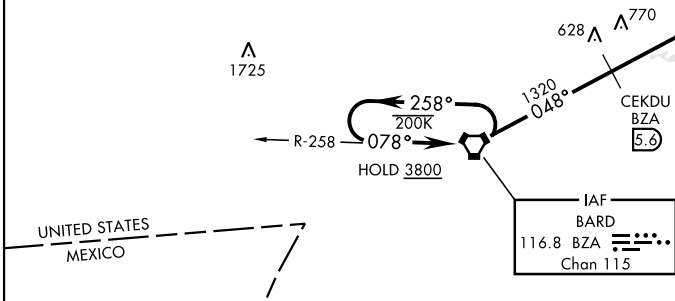
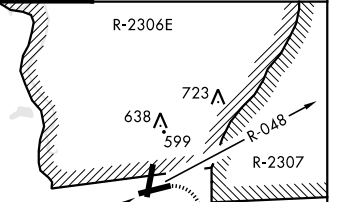
RADAR required for holding.

MISSED APPROACH: Climbing right turn to 3800 direct BZA VORTAC and hold, continue climb-in-hold to 3800.

▼ * Procedure not authorized at night.
▲ NA ** Circling not authorized NW of rwy 06 and 18.

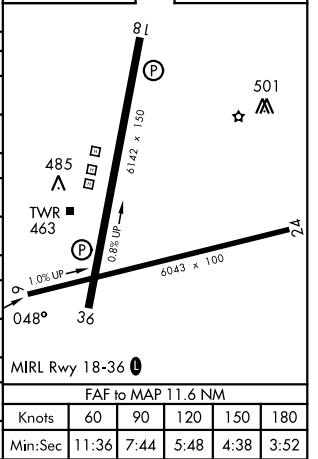
ATIS 128.225	YUMA APP CON 124.7 371.975	TOWER ★ 126.2 (CTAF) 242.175	GND CON 121.8 229.4
------------------------	--------------------------------------	--	-------------------------------

Helicopter visibility reduction not authorized.
 Procedure not authorized when airfield closed.
 Unlit road 379' MSL, 314' from threshold.
 Obtain local altimeter setting on CTAF.
 When not received, use Yuma MCAS Intl altimeter setting.



ELEV 433	TDZE 387
----------	----------

CATEGORY	A	B	C	D
S-6*	1320-1¼ 933 (900-1¼)		1320-2½ 933 (900-2½)	
CIRCLING**	1320-1¼ 887 (900-1¼)		1320-2¾ 887 (900-2¾)	1320-3 887 (900-3)
DME MINIMA				
S-6*	1040-1 653 (700-1)		1040-1⅞ 653 (700-1⅞)	
CIRCLING**	1080-1 647 (700-1)		1080-1⅞ 647 (700-1⅞)	1080-2 647 (700-2)
YUMA MCAS/YUMA Intl ALTIMETER SETTING				
S-6*	1400-1¼ 1013 (1000-1¼)	1400-1½ 1013 (1000-1½)	1400-3 1013 (1000-3)	
CIRCLING**	1400-1¼ 967 (1000-1¼)	1400-1½ 967 (1000-1½)	1400-3 967 (1000-3)	
YUMA MCAS/YUMA Intl ALTIMETER SETTING DME MINIMA				
S-6*	1120-1 733 (700-1)		1120-2 733 (700-2)	
CIRCLING**	1160-1 727 (800-1)		1160-2 727 (800-2)	1160-2¼ 727 (800-2¼)



YUMA, ARIZONA 32°52'N-114°24'W LAGUNA AAF (YUMA PROVING GROUND) (KLGf)

Amtd 7 05OCT23

VOR RWY 6

SW-4, 14 MAY 2026 to 11 JUN 2026

SW-4, 14 MAY 2026 to 11 JUN 2026