

WAAS CH <b>65635</b> <b>W36A</b>	APP CRS <b>357°</b>	Rwy Idg <b>3998</b> TDZE <b>413</b> Apt Elev <b>415</b>
--	------------------------	---

# RNAV (GPS) RWY 36

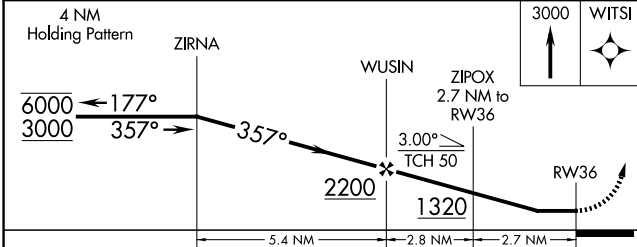
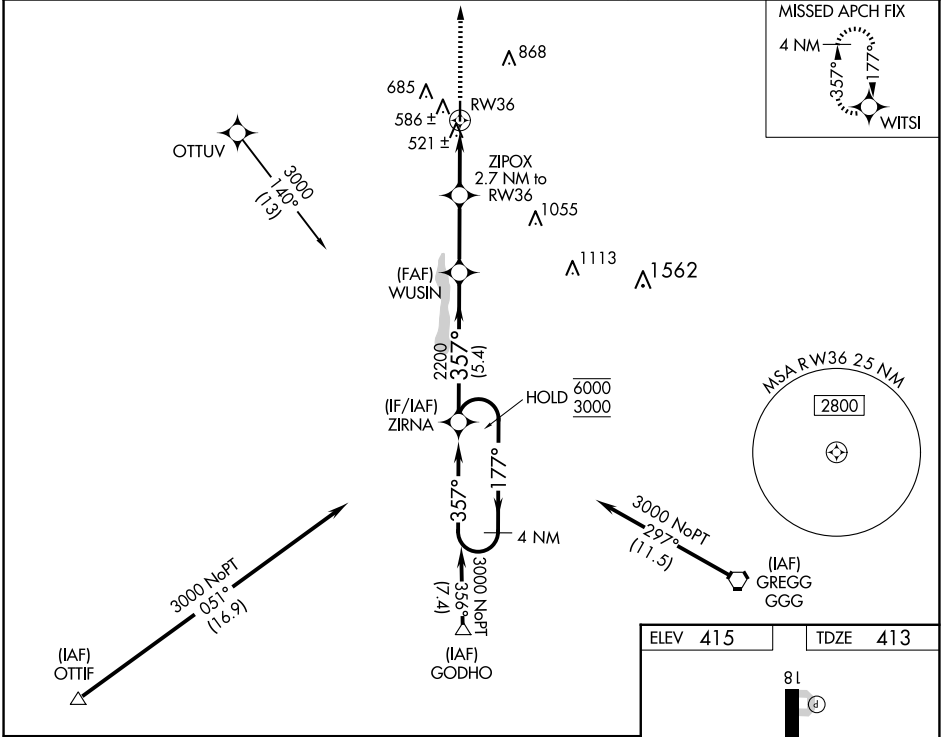
FOX STEPHENS FLD/GILMER MUNI (JXI)

RNP APCH - GPS.

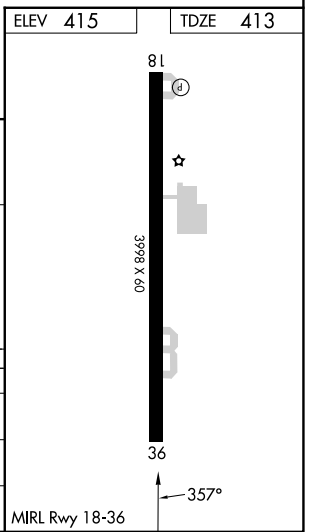
**⚠** Procedure NA at night. Rwy 36 helicopter visibility reduction below 1 SM NA. When local altimeter setting not received, use Longview altimeter setting and increase all MDAs 60 feet and LNAV visibility Cat C ½ SM and LP and Circling visibility Cat C ¼ SM.

MISSED APPROACH: Climb to 3000 direct WITSI and hold.

AWOS-3PT <b>120.250</b>	LONGVIEW APP CON ★ <b>124.275 257.975</b>	CTAF <b>122.9</b>
----------------------------	--	----------------------



CATEGORY	A	B	C	D
LP MDA	780-1 367 (400-1)			NA
LNAV MDA	840-1	427 (500-1)	840-1¼ 427 (500-1¼)	NA
<b>C</b> CIRCLING	1000-1 585 (600-1)	1060-1 645 (700-1)	1180-2¼ 765 (800-2¼)	NA



SC-2, 14 MAY 2026 to 11 JUN 2026

SC-2, 14 MAY 2026 to 11 JUN 2026