

WAAS CH 61313 W29A	APP CRS 292°	Rwy Ldg TDZE 137 Apt Elev 142
--	------------------------	---

RNAV (GPS) RWY 29

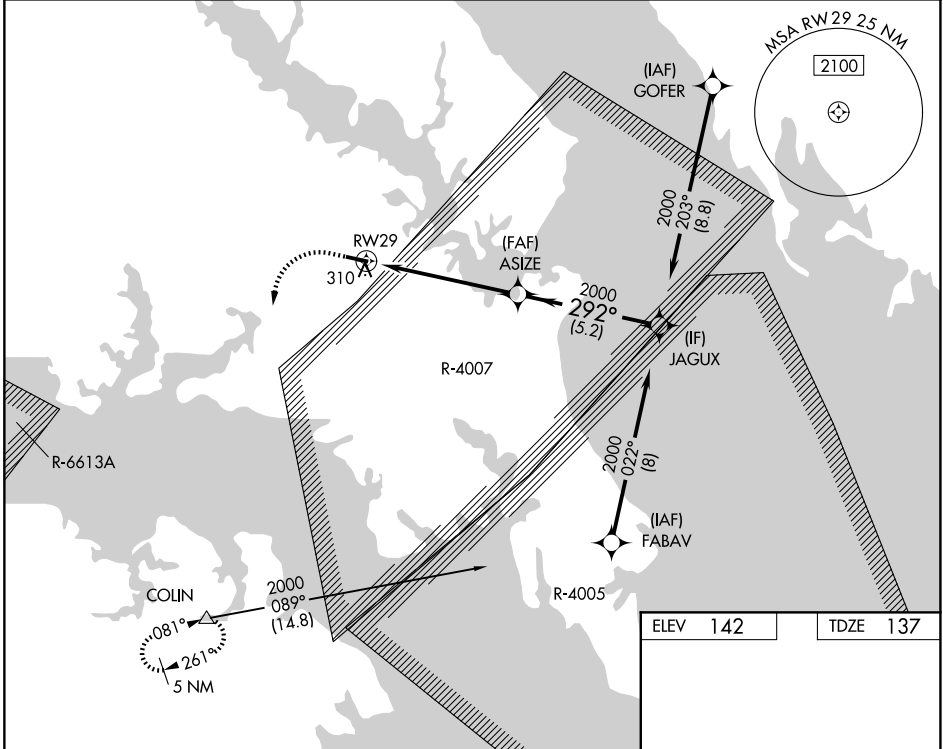
ST MARY'S COUNTY RGNL (2W6)

RNP APCH - GPS.

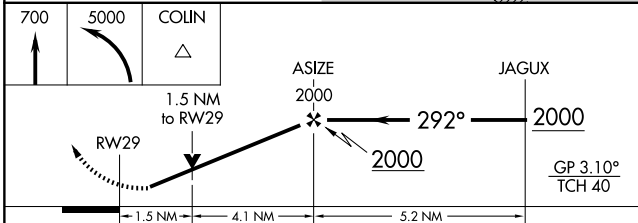
NA Rwy 29 helicopter visibility reduction below $\frac{3}{4}$ SM NA. For uncompensated Baro-VNAV systems, LNAV/VNAV NA below -1.5°C or above 54°C. When local altimeter setting not received, use Patuxent River altimeter setting: increase LPV DA to 475 feet and all visibilities $\frac{1}{8}$ SM, increase LNAV/VNAV DA to 688 feet and all visibilities $\frac{1}{4}$ SM. Increase all MDAs 40 feet and LNAV visibility Cats C/D $\frac{1}{8}$ SM.

MISSED APPROACH: Climb to 700 then climbing left turn to 5000 direct COLIN and hold, continue climb in hold to 5000.

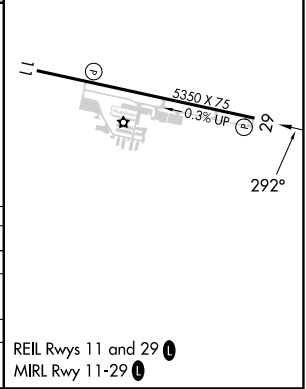
AWOS-3 119.575	PATUXENT APP CON ★ 121.0 250.3	UNICOM 123.0 (CTAF)
--------------------------	--	-------------------------------



ELEV 142	TDZE 137
----------	----------



CATEGORY	A	B	C	D
LPV DA		441- $\frac{7}{8}$	304 (300- $\frac{7}{8}$)	
LNAV/VNAV DA		654-1 $\frac{3}{8}$	517 (600-1 $\frac{3}{8}$)	
LNAV MDA	620-1	483 (500-1)	620-1 $\frac{3}{8}$	483 (500-1 $\frac{3}{8}$)
CIRCLING	660-1	518 (600-1)	840-2 698 (700-2)	840-2 $\frac{1}{4}$ 698 (700-2 $\frac{1}{4}$)



REIL Rwy 11 and 29 **1**
MIRL Rwy 11-29 **1**

NE-3, 14 MAY 2026 to 11 JUN 2026

NE-3, 14 MAY 2026 to 11 JUN 2026