

WAAS CH 65730 W33A	APP CRS 335°	Rwy Ldg TDZE Apt Elev	5201 4028 4038
--	------------------------	-----------------------------	---

RNAV (GPS) RWY 33

STERLING MUNI (STK)

RNP APCH.

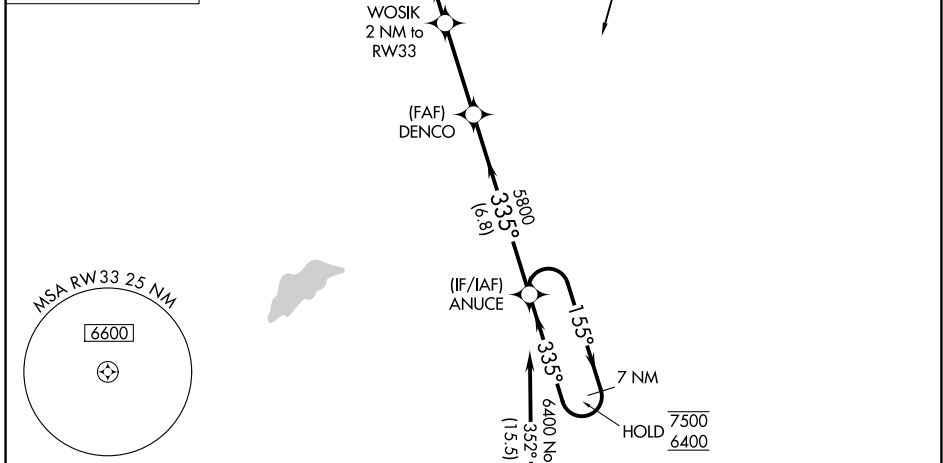
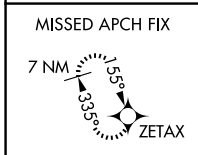
⚠ Circling NA to Rws 4 and 22.
⚠ For uncompensated Baro-VNAV systems, LNAV/VNAV NA below -22°C or above 54°C.

MISSED APPROACH:
 Climb to 7500 direct ZETAX and hold,
 continue climb-in-hold to 7500.

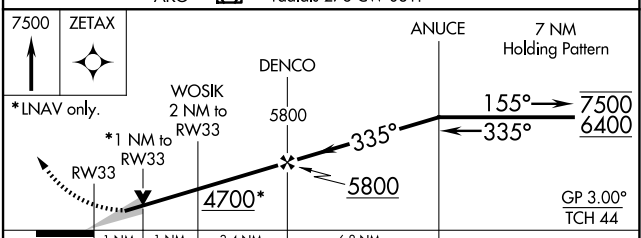
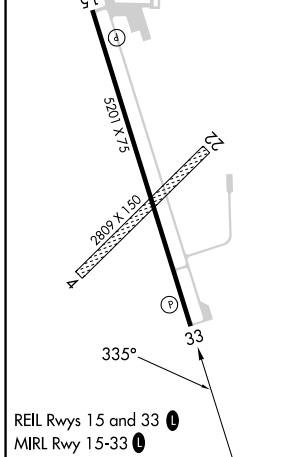
AWOS-3
118,525

DENVER CENTER
118,475 225.4

UNICOM
122.8 (CTAF) ①



ELEV 4038	TDZE 4028
------------------	------------------



CATEGORY	A	B	C	D
LPV DA		4278- ³ / ₄	250 (300- ³ / ₄)	
LNAV/VNAV DA		4332-1	304 (300-1)	
LNAV MDA		4400-1	372 (400-1)	
CIRCLING	4520-1 482 (500-1)	4580-1 542 (600-1)	4620-1½ 582 (600-1½)	4720-2¼ 682 (700-2¼)

SW-1, 14 MAY 2026 to 11 JUN 2026

SW-1, 14 MAY 2026 to 11 JUN 2026