

WAAS CH 82311 W22A	APP CRS 218°	Rwy Ldg TDZE Apt Elev	6000 1025 1025
--	------------------------	-----------------------------	---

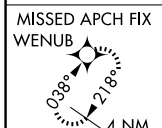
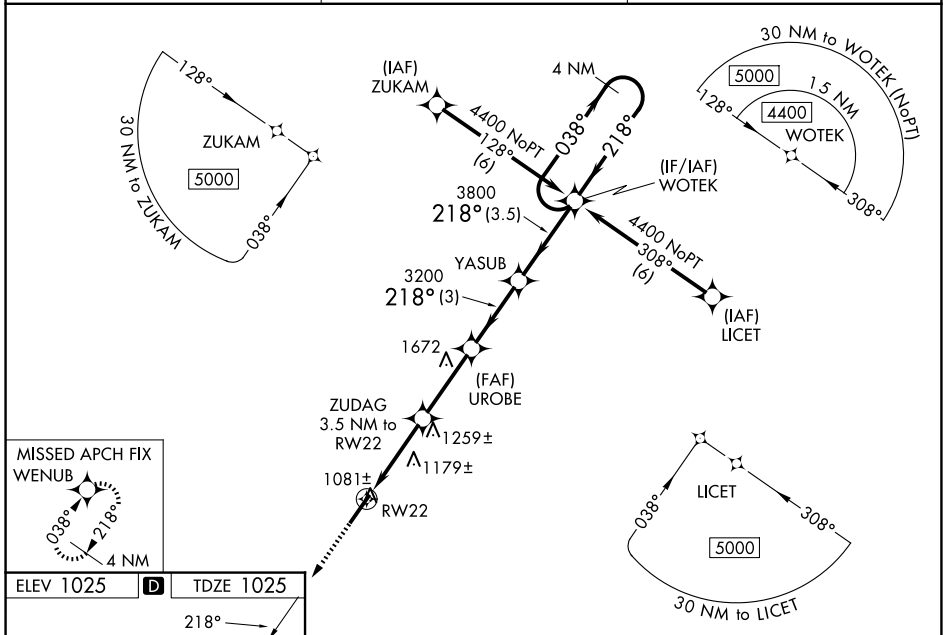
RNAV (GPS) RWY 22

UPPER CUMBERLAND RGNL (SR.B)

▼ Baro-VNAV NA when using Crossville altimeter setting. For uncompensated Baro-VNAV systems, LNAV/VNAV NA below -17°C (2°F) or above 54°C (130°F). DME/DME RNP-0.3 NA. When local altimeter setting not received, use Crossville altimeter setting and increase LPV DA to 1447 feet, LNAV/VNAV DA to 1633 feet, increase LPV and LNAV/VNAV visibility ¾ SM. Increase all MDA 180 feet and LNAV Cat C visibility ¼ SM, Cat D visibility ½ SM. Increase Circling Cat C visibility ¾ SM and Circling Cat D visibility ¼ SM. VDP NA when using Crossville altimeter setting.

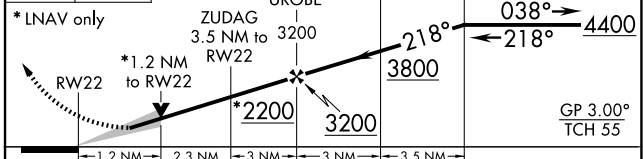
▲ NA MISSED APPROACH: Climb to 4000 direct WENUB and hold.

AWOS-3P 128.25	MEMPHIS CENTER 128.15 323.125	UNICOM 122.975 (CTAF) 0
--------------------------	---	-----------------------------------



ELEV 1025	D	TDZE 1025
-----------	----------	-----------

4000	WENUB	VGSI and RNAV glidepath not coincident (VGSI Angle 3.00/TCH 25).	4 NM
			WOTEK Holding Pattern



CATEGORY	A	B	C	D
LPV DA		1275-¾	250 (300-¾)	
LNAV/VNAV DA		1461-1½	436 (500-1½)	
LNAV MDA	1440-1	415 (500-1)	1440-1¼	415 (500-1¼)
CIRCLING	1480-1	455 (500-1)	1600-1½ 575 (600-1½)	1880-2¾ 855 (900-2¾)

HIRL Rwy 4-22 0
REIL Rwy 4 and 22 0
RLS Rwy 4 0

SE-1, 14 MAY 2026 to 11 JUN 2026

SE-1, 14 MAY 2026 to 11 JUN 2026