

WAAS CH 86847 W35A	APP CRS 347°	Rwy Ldg 4005 TDZE 442 Apt Elev 442
--	------------------------	---

RNAV (GPS) RWY 35

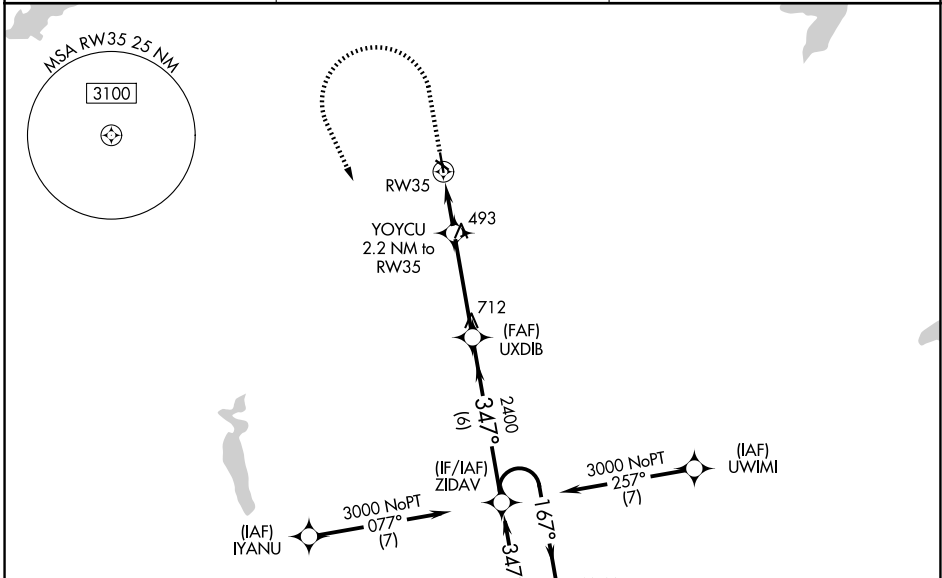
RUSK COUNTY (R.F.I)

RNP APCH - GPS.

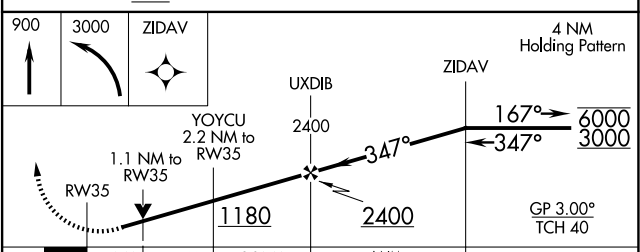
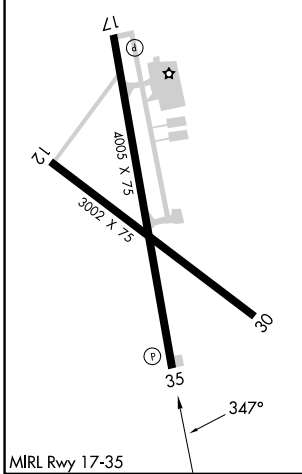
⚠ Baro-VNAV and VDP NA when using GGG altimeter setting. For uncompensated Baro-VNAV systems, LNAV/VNAV NA below -15°C or above 54°C. Rwy 35 helicopter visibility reduction below ¾ SM NA. Circling Rwy 12, 17 and 30 NA at night. When local altimeter setting not received, use GGG altimeter setting and increase LPV DA to 740 feet; increase LNAV/VNAV DA to 904 feet and all visibilities ¼ SM. Increase all MDAs 60 feet and LNAV visibility Cat C ¼ SM, and Circling visibility Cat C ¼ SM.

MISSED APPROACH: Climb to 900 then climbing left turn to 3000 direct ZIDAV and hold.

AWOS-3 119.375	LONGVIEW APP CON ★ 124.275 257.975	UNICOM 122.8 (CTAF)
--------------------------	--	-------------------------------



ELEV 442	TDZE 442
-----------------	-----------------



CATEGORY	A	B	C	D
LPV DA	692-1	250 (300-1)		NA
LNAV/VNAV DA	856-1½	414 (500-1½)		NA
LNAV MDA	840-1	398 (400-1)	840-1½ 398 (400-1½)	NA
CIRCLING	920-1 478 (500-1)	960-1 518 (600-1)	1200-2¼ 758 (800-2¼)	NA

SC-2, 14 MAY 2026 to 11 JUN 2026

SC-2, 14 MAY 2026 to 11 JUN 2026