

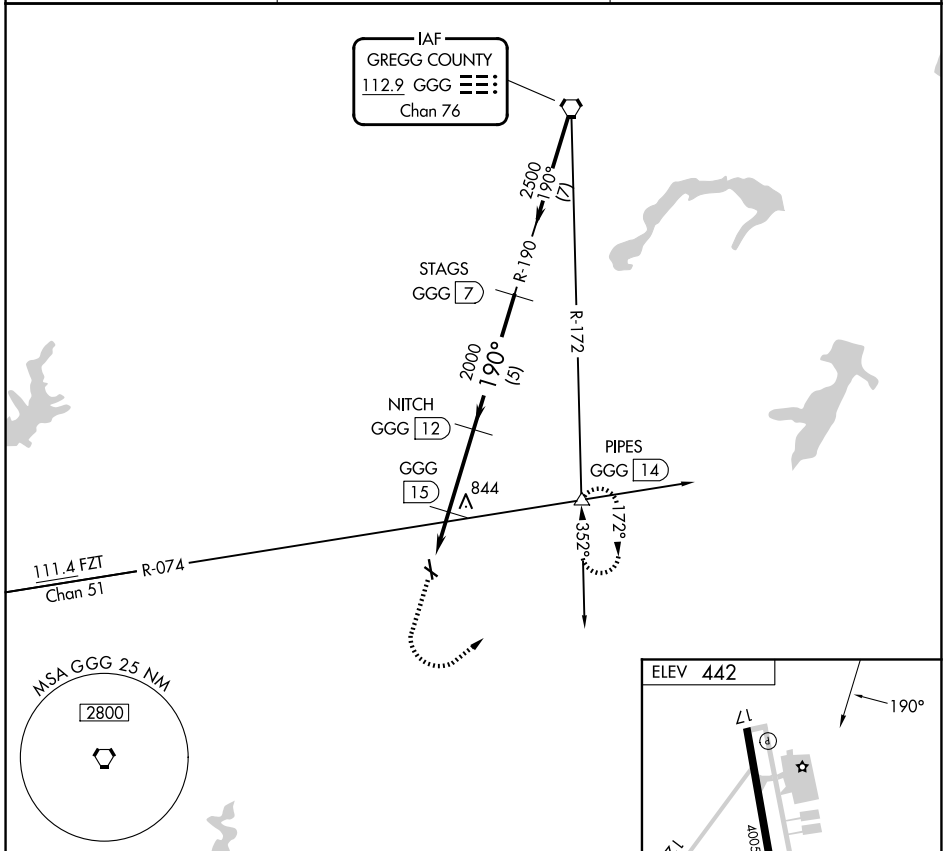
VORTAC GGG 112.9 Chan 76	APP CRS 190°	Rwy Ldg TDZE Apt Elev N/A N/A 442
---------------------------------------	------------------------	---

VOR/DME-A
RUSK COUNTY (R.F.I)

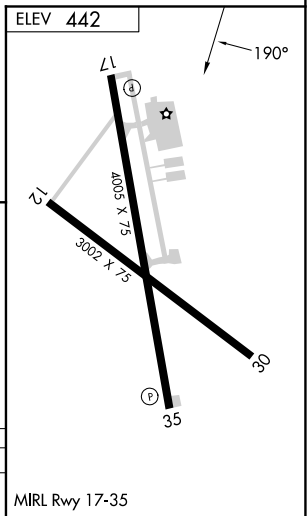
NA When local altimeter setting not received, use Longview altimeter setting and increase all MDAs 60 feet and Circling Cat C visibility 1/4 SM. Circling Rwy 12, 17 and 30 NA at night.

MISSED APPROACH: Climb to 1800 then climbing left turn to 2500 via heading 045° and GGG R-172 to PIPES INT/14 DME and hold.

AWOS-3 119.375	LONGVIEW APP CON ★ 124.275 257.975	UNICOM 122.8 (CTAF)
--------------------------	--	-------------------------------



1800	2500	hdg 045°	GGG R-172	PIPES GGG 14	STAGS GGG 7
1300		2000		2500	
1.9 NM		3 NM		5 NM	
CATEGORY	A	B	C	D	
CIRCLING	1220-1 778 (800-1)	1220-1¼ 778 (800-1¼)	1220-2¼ 778 (800-2¼)	NA	



SC-2, 14 MAY 2026 to 11 JUN 2026

SC-2, 14 MAY 2026 to 11 JUN 2026