

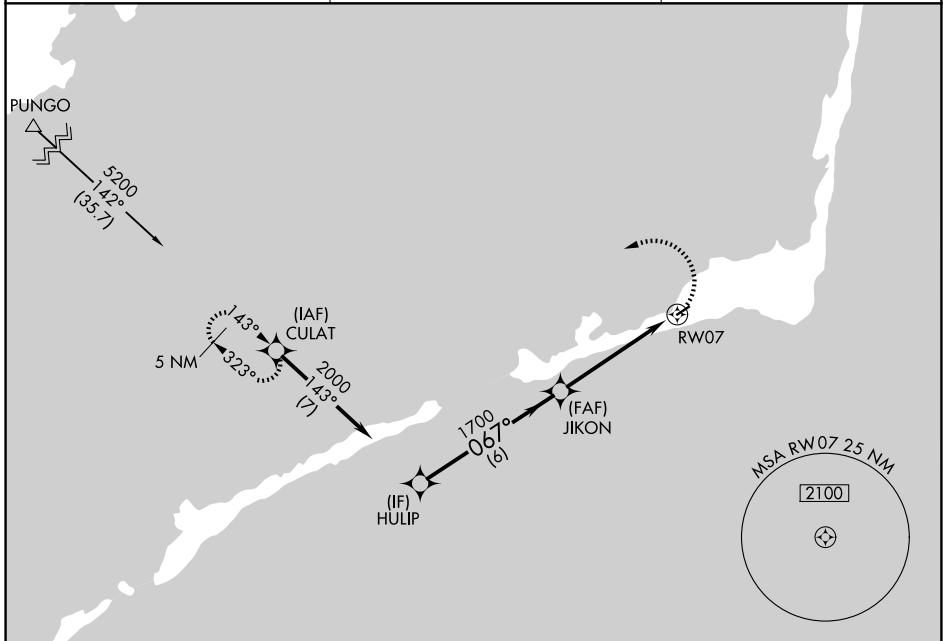
APP CRS	Rwy Ldg	<b>3002</b>
<b>067°</b>	TDZE	<b>16</b>
	Apt Elev	<b>16</b>

# RNAV (GPS) RWY 7

BILLY MITCHELL (HSE)

RNP APCH - GPS.	MISSED APPROACH: Climbing left turn to 6000 direct CULAT and hold, continue climb-in-hold to 6000.
Rwy 7 helicopter visibility reduction below 1 SM NA. Procedure NA at night.	

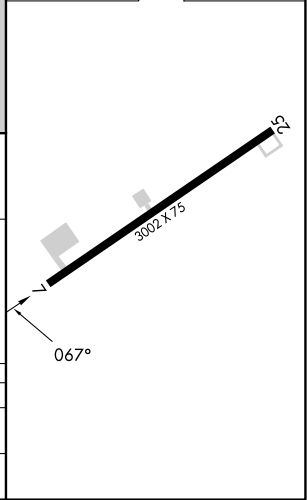
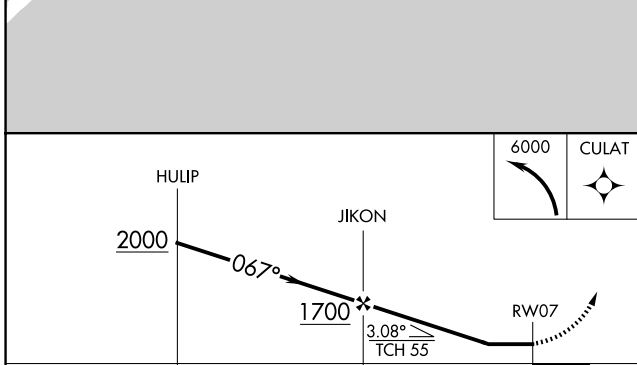
ASOS <b>118.375</b>	CHERRY POINT APP CON <b>119.75 360.775</b>	CTAF <b>122.9</b>
------------------------	---	----------------------



SE-2, 14 MAY 2026 to 11 JUN 2026

SE-2, 14 MAY 2026 to 11 JUN 2026

ELEV 16	TDZE 16
---------	---------



CATEGORY	A	B	C	D
LNVA MDA	500-1	484 (500-1)	500-1½ 484 (500-1¾)	NA
CIRCLING	560-1	544 (600-1)	560-1½ 544 (600-1½)	NA