

WAAS CH <b>45837</b> <b>W14A</b>	APP CRS <b>143°</b>	Rwy Ldg TDZE Apt Elev	<b>3455</b> <b>1155</b> <b>1157</b>
--	------------------------	-----------------------------	---

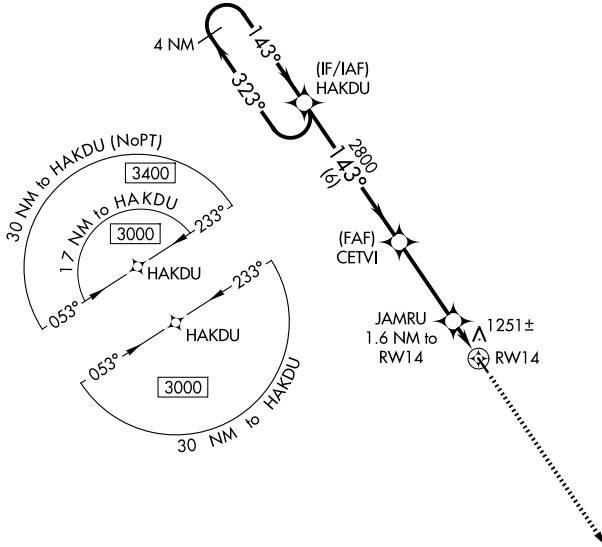
# RNAV (GPS) RWY 14

CLARION MUNI (CAV)

**⚠** For uncompensated Baro-VNAV systems, LNAV/VNAV NA below -17°C (2°F) or above 54°C (130°F). DME/DME RNP-0.3 NA. When local altimeter setting not received, use Fort Dodge altimeter setting and increase all DA 52 feet, all MDA 60 feet; increase LPV and LNAV/VNAV all Cats visibility 1/8 mile. Baro-VNAV and VDP NA when using Fort Dodge altimeter setting. Helicopter visibility reduction below 3/4 SM NA.

MISSED APPROACH: Climb to 3000 direct FEGNU and hold.

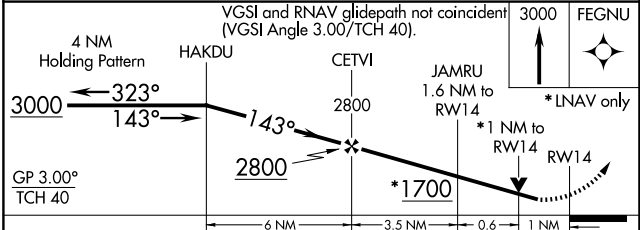
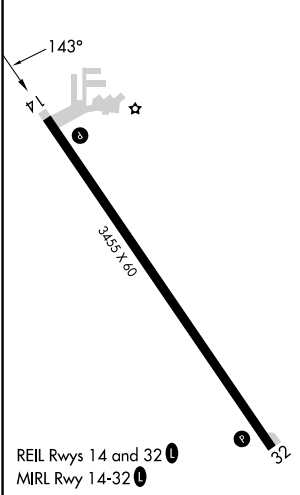
AWOS-3 <b>126,575</b>	MINNEAPOLIS CENTER <b>134.0 288,3</b>	UNICOM <b>122.8 (CTAF) 0</b>
--------------------------	--	---------------------------------



NC-3, 14 MAY 2026 to 11 JUN 2026

NC-3, 14 MAY 2026 to 11 JUN 2026

ELEV 1157	TDZE 1155
-----------	-----------



CATEGORY	A	B	C	D
LPV DA	1405-1	250 (300-1)		NA
LNAV/VNAV DA	1415-1	260 (300-1)		NA
LNAV MDA	1520-1	365 (400-1)		NA
CIRCLING	1680-1	523 (600-1)		NA