

WAAS CH <b>72626</b> <b>W05A</b>	APP CRS <b>047°</b>	Rwy Ldg TDZE Apt Elev	<b>4001</b> <b>12</b> <b>13</b>
--	------------------------	-----------------------------	---------------------------------------

# RNAV (GPS) RWY 5

DARE COUNTY RGNL (MQI)

RNP APCH - GPS.

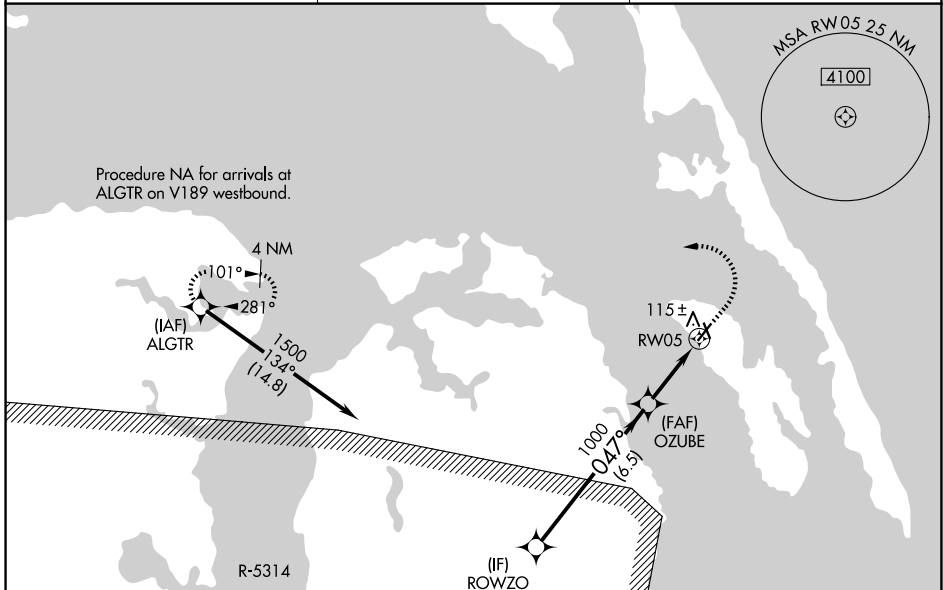
**▽**  
**▲** Circling Rwy 17, 23, 35 NA at night. For uncompensated Baro-VNAV systems, LNAV/VNAV NA below -5°C or above 34°C.

MISSED APPROACH: Climb to 500 then climbing left turn to 3000 direct ALGTR and hold.

AWOS-3  
**128.275**

CHERRY POINT APP CON  
**124.725 350.35**

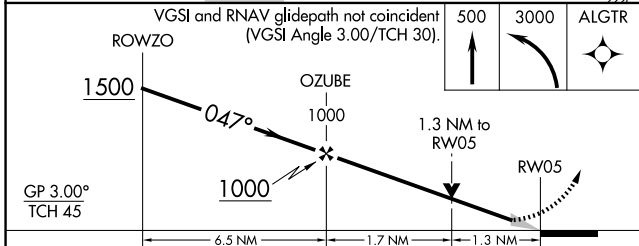
UNICOM  
**122.8 (CTAF) 0**



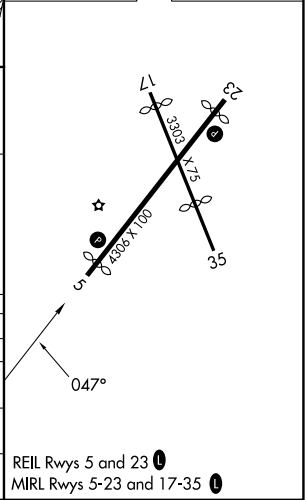
SE-2, 14 MAY 2026 to 11 JUN 2026

SE-2, 14 MAY 2026 to 11 JUN 2026

ELEV 13	TDZE 12
---------	---------



CATEGORY	A	B	C	D
LPV DA	262-3/4	250 (300-3/4)		NA
LNAV/VNAV DA	347-1	335 (400-1)		NA
LNAV MDA	460-1	448 (500-1)	460-1 3/8 448 (500-1 3/8)	NA
CIRCLING	600-1	587 (600-1)	600-1 1/2 587 (600-1 1/2)	NA



REIL Rwy 5 and 23 0  
MIRL Rwy 5-23 and 17-35 0