

COPTER RNAV (GPS) Y RWY 23

[USA]

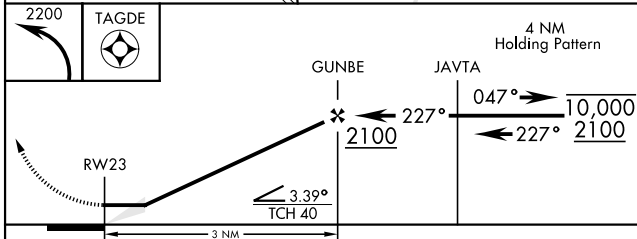
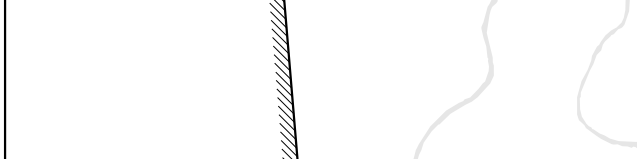
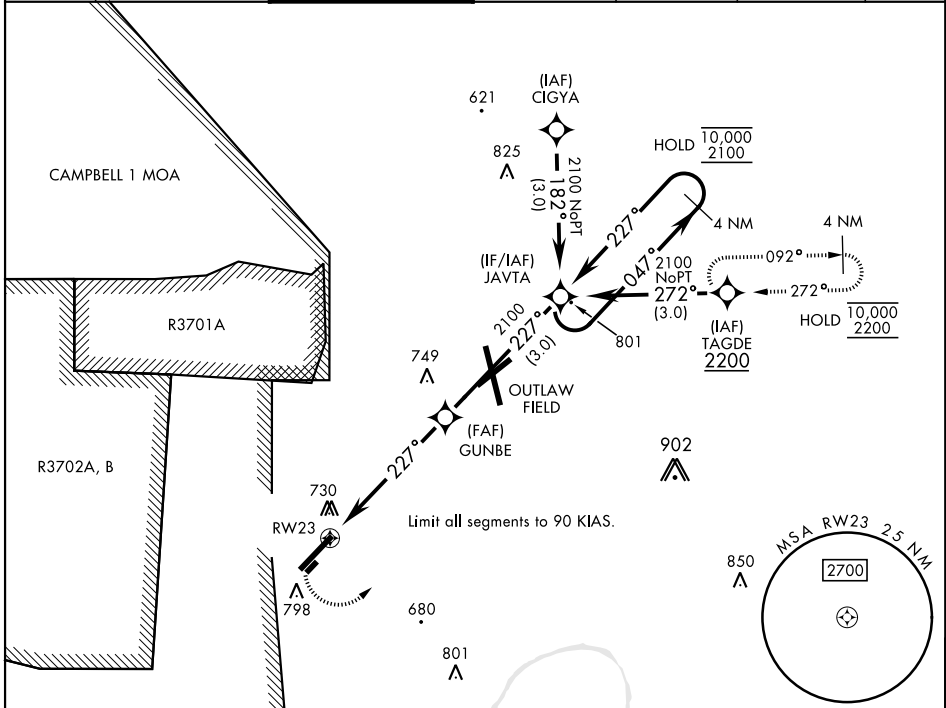
SABRE AAF (FORT CAMPBELL) (KEOD)

APCH CRS	Rwy ldg	5000
227°	THRE	573
	Arpt Elev	596

RNP APCH - GPS
RADAR required
▼ When local altimeter setting not received, use Campbell AAF (Fort Campbell), KY altimeter setting.

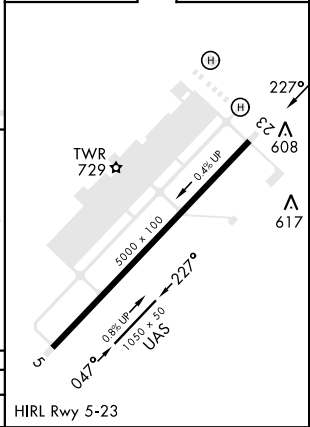
MISSED APPROACH: Climbing left turn to 2200 direct TAGDE and hold.

ATIS	CAMPBELL APP CON	TOWER ★	GND CON	CLNC DEL	EAGLE RADIO	ASR
306.5	134.35 307.025	124.675 (CTAF) 290.45	142.975 267.3	237.6	139.9 285.7	



CATEGORY	COPTER		
LNAV MDA	1060-1	473	(500-1)

ELEV	596	THRE	573
------	-----	------	-----



COPTER RNAV (GPS) Y RWY 23

SE-1, 14 MAY 2026 to 11 JUN 2026

SE-1, 14 MAY 2026 to 11 JUN 2026