

CLARKSVILLE, TENNESSEE

RNAV (GPS) X RWY 23

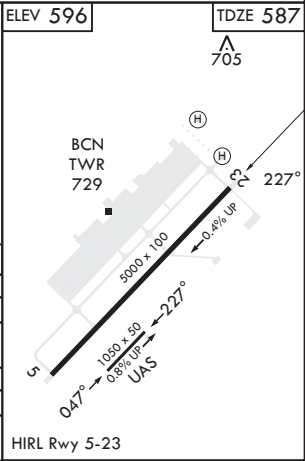
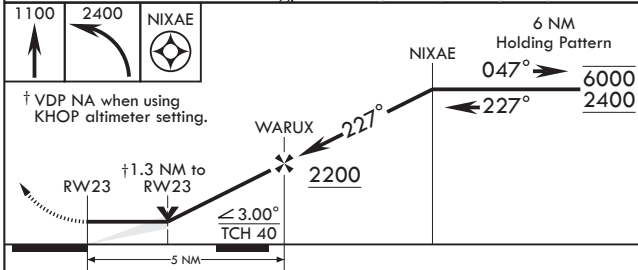
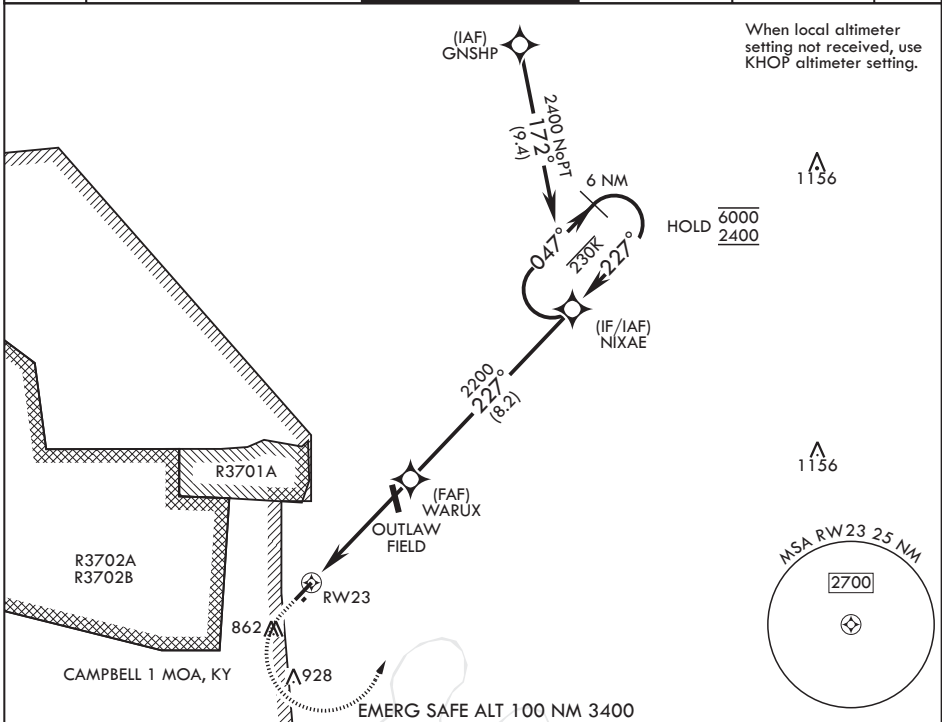
APCH CRS	Rwy Idg	5000
227°	TDZE	587
	Arprt Elev	596

(USA)

SABRE AAF (FORT CAMPBELL) (KEOD)

RNP APCH-GPS	MISSED APPROACH: Climb to 1100 then climbing left turn to 2400 direct NIXAE and hold.
RADAR required for procedure entry.	

ATIS	CAMPBELL APP CON/DEP CON	TOWER *	GND CON	EAGLE RADIO	ASR
306.5	134.35 307.025	124.675 (CTAF) 290.45	142.975 267.3	139.9 285.7	



CATEGORY	A	B	C	D
LNAV MDA	1020-1	433 (500-1)	1020-1¼	433 (500-1¼)
CIRCLING	1140-1 545 (600-1)	1220-1 625 (700-1)	1240-1¾ 645 (700-1¾)	1240-2 645 (700-2)
KHOP ALTIMETER SETTING MINIMUMS				
LNAV MDA	1040-1	453 (500-1)	1040-1⅝	453 (500-1⅝)
CIRCLING	1160-1 565 (600-1)	1240-1 645 (700-1)	1260-1¾ 665 (700-1¾)	1260-2 665 (700-2)

CLARKSVILLE, TENNESSEE

36°34'N - 87°29'W

SABRE AAF (FORT CAMPBELL) (KEOD)

Amdt 2 14MAY26

RNAV (GPS) X RWY 23

SE-1, 14 MAY 2026 to 11 JUN 2026

SE-1, 14 MAY 2026 to 11 JUN 2026