

CLARKSVILLE, TENNESSEE

# RNAV (GPS) X RWY 5

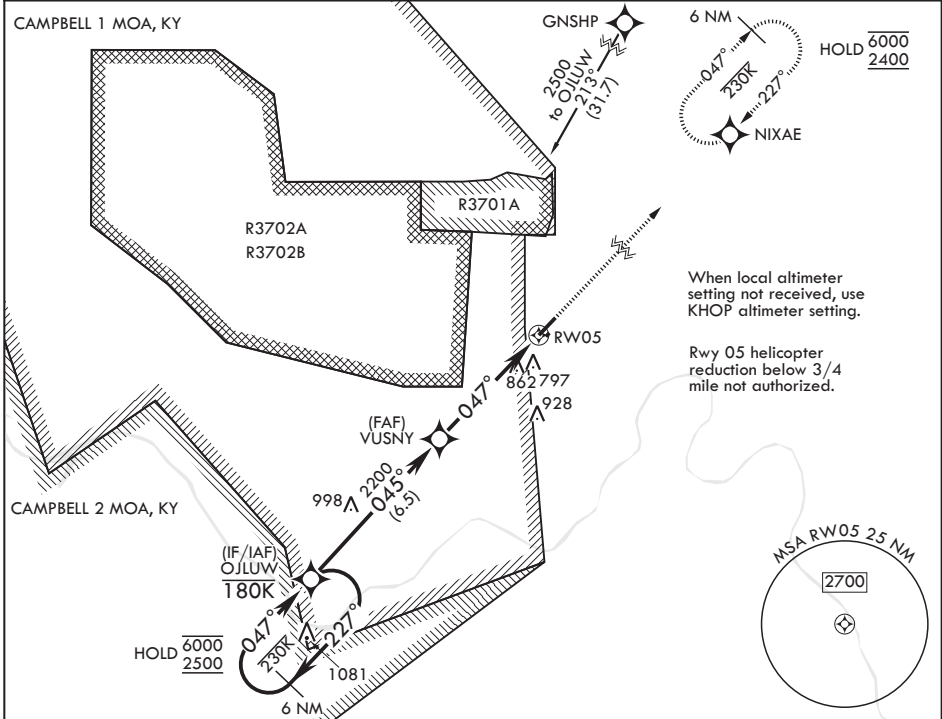
APCH CRS	Rwy Idg	5000
047°	TDZE	595
	Arprt Elev	596

(USA)

SABRE AAF (FORT CAMPBELL) (KEOD)

RNP APCH-GPS	MISSED APPROACH: Climb to 2400 direct NIXAE and hold.
RADAR required for procedure entry.	

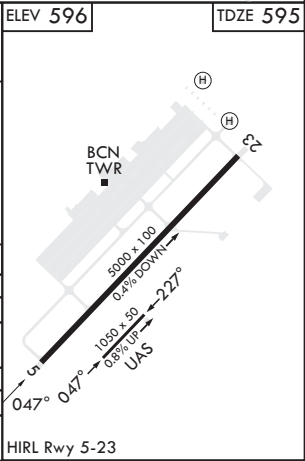
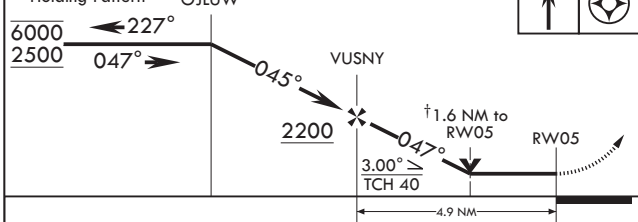
ATIS	CAMPBELL APP CON/DEP CON	TOWER*	GND CON	EAGLE RADIO	ASR
306.5	134.35 307.025	124.675 (CTAF) 290.45	142.975 267.3	139.9 285.7	



SE-1, 14 MAY 2026 to 11 JUN 2026

SE-1, 14 MAY 2026 to 11 JUN 2026

6 NM Holding Pattern OJLUW	† VDP NA with KHOP altimeter setting.	2400	NIXAE	ELEV 596	TDZE 595
----------------------------	---------------------------------------	------	-------	----------	----------



CATEGORY	A	B	C	D
LNAV MDA	1160-1 565 (600-1)	1220-1 625 (700-1)	1240-1 645 (700-1¼)	1240-2 645 (700-2)
KHOP ALTIMETER SETTING MINIMUMS				
LNAV MDA	1180-1 585 (600-1)	1240-1 645 (700-1)	1260-1 665 (700-1¼)	1260-2 665 (700-2)
CIRCLING	1180-1 585 (600-1)	1240-1 645 (700-1)	1260-1 665 (700-1¼)	1260-2 665 (700-2)

CLARKSVILLE, TENNESSEE

36°34'N - 87°29'W

SABRE AAF (FORT CAMPBELL) (KEOD)

Amdt 2 14MAY26

# RNAV (GPS) X RWY 5