

WAAS CH 72739 W21A	APP CRS 204°	Rwy Idg 4500 TDZE 157 Apt Elev 160
--	------------------------	---

RNAV (GPS) RWY 21

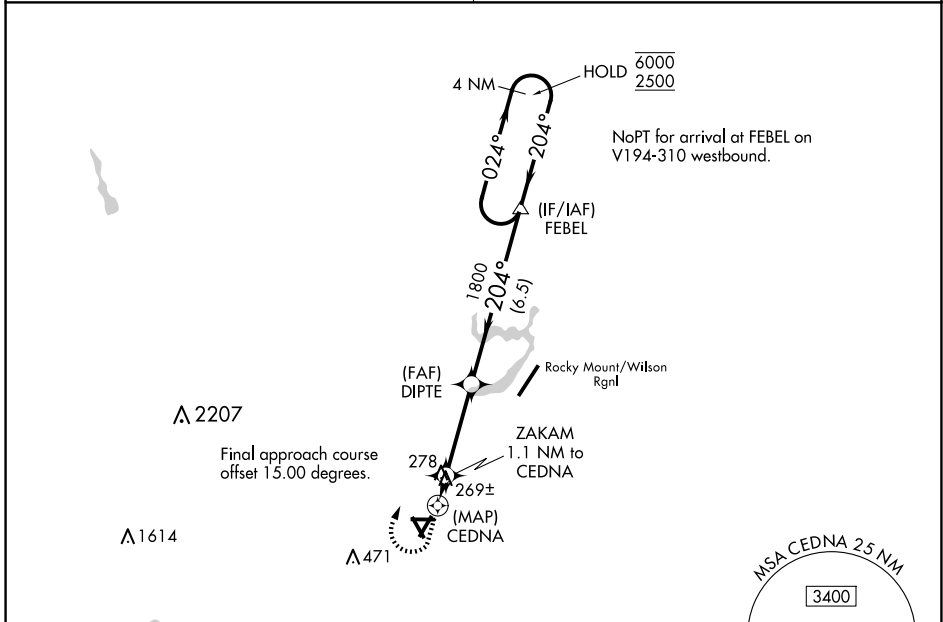
WILSON INDUSTRIAL AIR CENTER (W03)

RNP APCH.

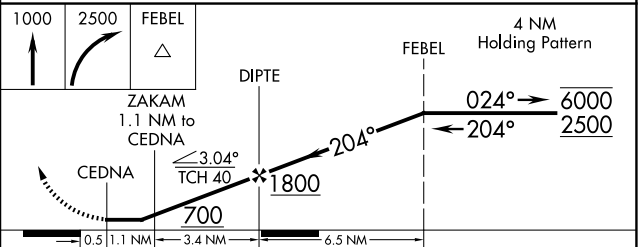
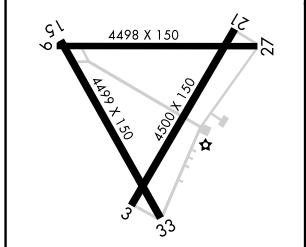
⚠ Circling Rwy 9, 15, 27, 33 NA at night. Obtain local altimeter setting on CTAF; when not received, use Rocky Mount altimeter setting and increase all MDA 20 feet; increase LP Cats C and D visibility 1/8 SM. Rwy 21 helicopter visibility reduction below 3/4 SM NA.

⚠ NA MISSED APPROACH: Climb to 1000, then climbing right turn to 2500 direct FEBEL and hold.

WASHINGTON CENTER 123.85 279.65	UNICOM 123.0 (CTAF) 0
---	---------------------------------



ELEV 160	TDZE 157
----------	----------



CATEGORY	A	B	C	D
LP MDA	520-1 363 (400-1)			
LNAV MDA	540-1	383 (400-1)	540-1 $\frac{1}{8}$	383 (400-1 $\frac{1}{8}$)
C CIRCLING	660-1	500 (500-1)	780-1 $\frac{3}{4}$ 620 (700-1 $\frac{3}{4}$)	780-2 620 (700-2)

SE-2, 14 MAY 2026 to 11 JUN 2026

SE-2, 14 MAY 2026 to 11 JUN 2026