

APP CRS	Rwy Idg	<b>4499</b>
<b>339°</b>	TDZE	<b>157</b>
	Apt Elev	<b>160</b>

# RNAV (GPS) RWY 33

WILSON INDUSTRIAL AIR CENTER (W03)

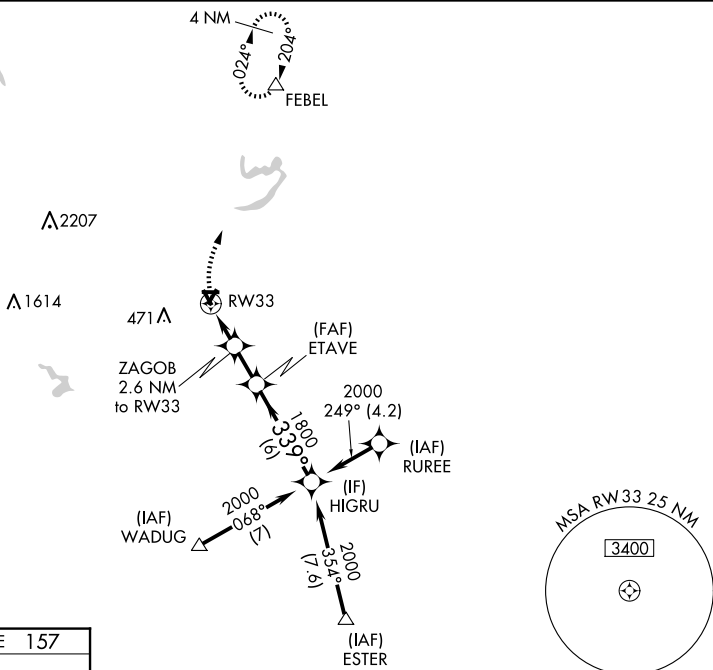
RNP APCH.

▼ Obtain local altimeter setting on CTAF; when not received, use Rocky Mount altimeter setting. Straight-in Rwy 33 NA at night, Circling Rwy 9, 15, 27, 33 NA at night. Rwy 33 helicopter visibility reduction below 1 SM NA.

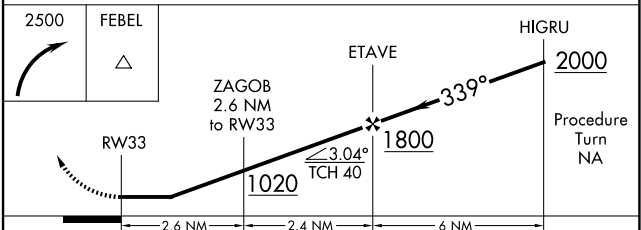
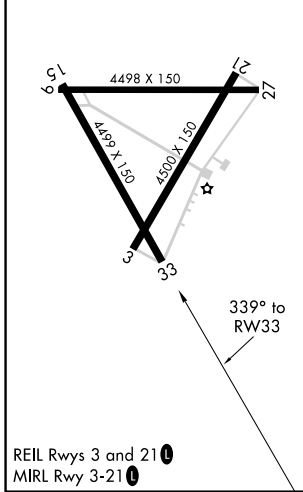
MISSED APPROACH: Climbing right turn to 2500 direct FEBEL WP and hold.

WASHINGTON CENTER  
**123.85 279.65**

UNICOM  
**123.0 (CTAF) 0**



ELEV 160	TDZE 157
----------	----------



CATEGORY	A	B	C	D
LNAV MDA	640-1 483 (500-1)	640-1¼ 483 (500-1¼)	640-1½ 483 (500-1½)	640-1½ 483 (500-1½)
CIRCLING	660-1 500 (500-1)	780-1¾ 620 (700-1¾)	780-2 620 (700-2)	780-2 620 (700-2)
ROCKY MOUNT ALTIMETER SETTING MINIMUMS				
LNAV MDA	660-1 503 (500-1)	660-1½ 503 (500-1½)		
CIRCLING	680-1 520 (600-1)	800-1¾ 640 (700-1¾)	800-2 640 (700-2)	

SE-2, 14 MAY 2026 to 11 JUN 2026

SE-2, 14 MAY 2026 to 11 JUN 2026