

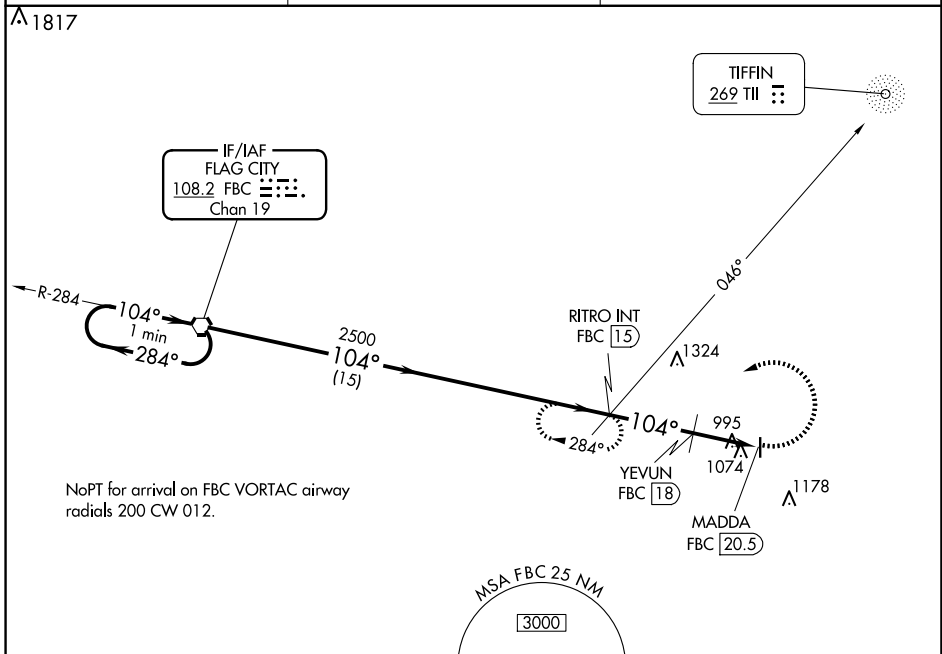
VORTAC FBC 108.2 Chan 19	APP CRS 104°	Rwy Idg TDZE Apt Elev N/A N/A 830
---------------------------------------	------------------------	---

VOR-A
WYANDOT COUNTY (56D)

NA Procedure NA at night. When local altimeter setting not received, use Marion altimeter setting: increase all MDAs 40 feet and visibility Cot C/D ¼ SM.

MISSED APPROACH: Climbing left turn to 2500 on FBC VORTAC R-104 to RITRO INT/15 DME and hold.

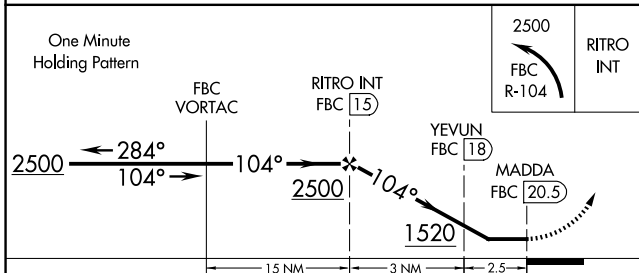
FDY ASOS 132.85	CLEVELAND APP CON * 128.35 360.65	UNICOM 123.05 (CTAF) 0
---------------------------	---	----------------------------------



NoPT for arrival on FBC VORTAC airway radials 200 CW 012.

ADF or DME REQUIRED

ELEV 830



CATEGORY	A	B	C	D
CIRCLING	1520-1 690 (700-1)	1520-1¼ 690 (700-1¼)	1540-2 710 (800-2)	1540-2¼ 710 (800-2¼)
YEVUN FIX MINIMUMS (DME REQUIRED)				
CIRCLING	1420-1 590 (600-1)	1440-1 610 (700-1)	1540-2 710 (800-2)	1540-2¼ 710 (800-2¼)

ELEV 830					
LURL Rwy 18-36 0					
FAF to MAP 5.5 NM					
Knots	60	90	120	150	180
Min:Sec	5:30	3:40	2:45	2:12	1:50

EC-2, 14 MAY 2026 to 11 JUN 2026

EC-2, 14 MAY 2026 to 11 JUN 2026