

APP CRS	Rwy Ldg	<b>3203</b>
<b>236°</b>	TDZE	<b>881</b>
	Apt Elev	<b>887</b>

# RNAV (GPS) RWY 24

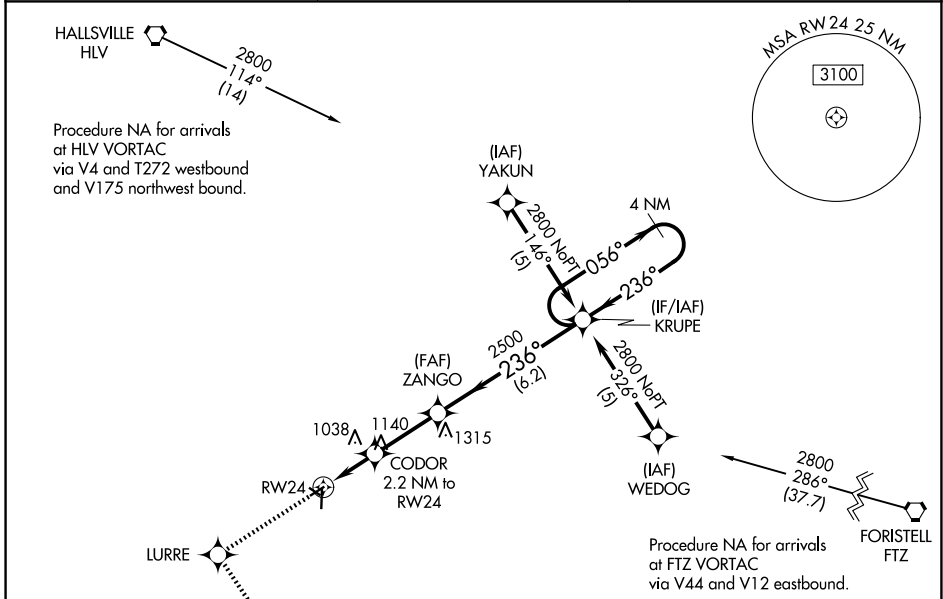
ELTON HENSLEY MEML (F'TT)

RNP APCH.

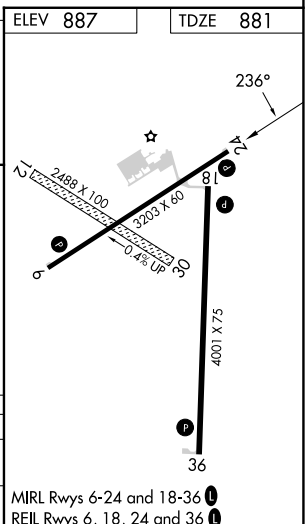
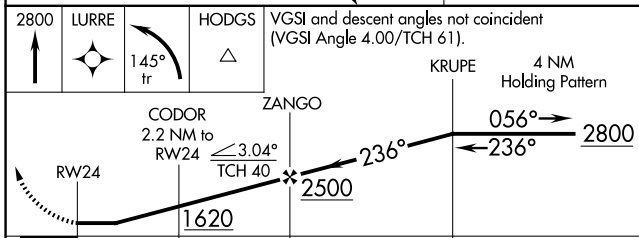
**NA** Use Columbia altimeter setting; when not received, use Jefferson City altimeter setting and increase all MDA 80 feet, and increase LNAV Cat C visibility ¼ mile. Rwy 24 helicopter visibility reduction below 1 SM NA. Circling NA to Rwys 12 and 30. Straight-in Rwy 24 NA at night, Circling Rwy 18, 24 NA at night.

**MISSED APPROACH:** Climb to 2800 direct LURRE and left turn via 145° track to HODGS and hold.

COU ASOS <b>128.45</b>	MIZZU APP CON <b>124.375 353.925</b>	UNICOM <b>122.7 (CTAF) 0</b>
---------------------------	---	---------------------------------



ELEV 887	TDZE 881
----------	----------



CATEGORY	A	B	C	D
LNAV MDA	1320-1	439 (500-1)	1320-1¼ 439 (500-1¼)	NA
CIRCLING	1380-1 493 (500-1)	1480-1 593 (600-1)	1560-2 673 (700-2)	NA

NC-3, 14 MAY 2026 to 11 JUN 2026

NC-3, 14 MAY 2026 to 11 JUN 2026