

WAAS CH <b>82714</b> <b>W22A</b>	APP CRS <b>217°</b>	Rwy Ldg TDZE Apt Elev	<b>5001</b> <b>465</b> <b>468</b>
--	------------------------	-----------------------------	---

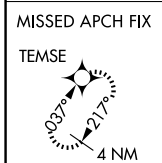
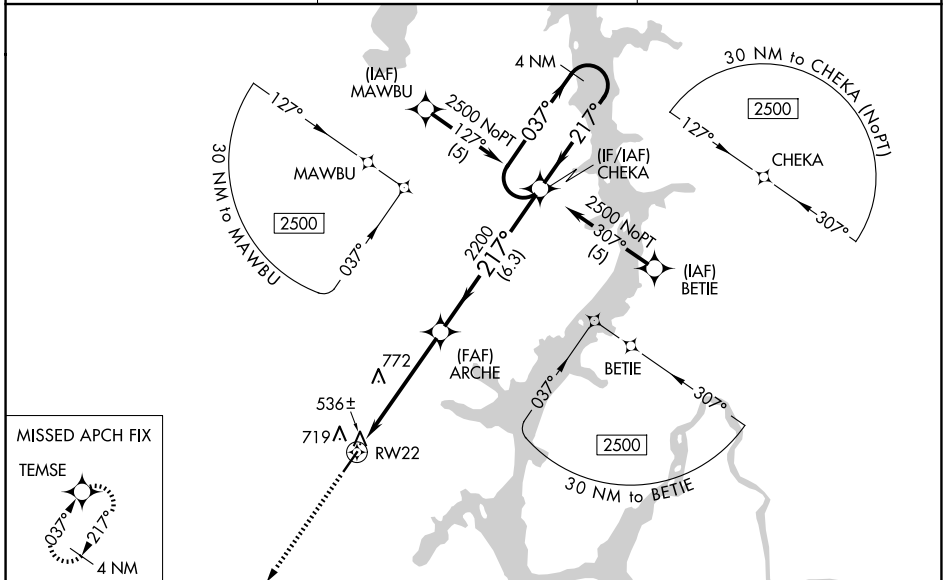
AL-6386 (FAA)

# RNAV (GPS) RWY 22

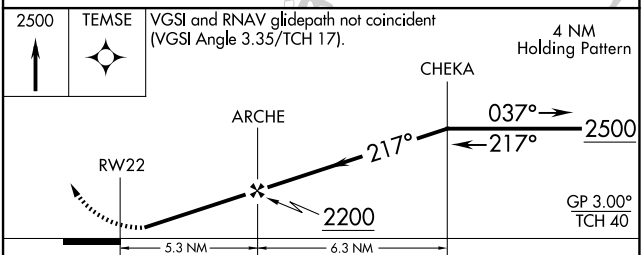
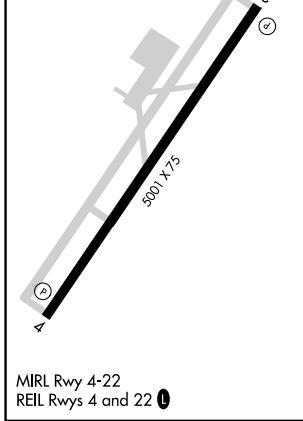
BENTON COUNTY (ØM4)

RNP APCH.	<p>Baro-VNAV NA. Rwy 22 helicopter visibility reduction below 1 SM NA.                  Use Beech River Rgnl altimeter setting; when not received, use Jackson altimeter setting and increase all DA 58 feet and all MDA 60 feet and increase LPV all Cats visibility 1/4 mile, LNAV/VNAV all Cats visibility 1/4 mile, and LNAV Cat C visibility 1/4 mile. Procedure NA at night.</p>	MISSED APPROACH: Climb to 2500 direct TEMSE and hold.
-----------	--	---

PVE AWOS-3 <b>118.125</b>	MEMPHIS CENTER <b>125.85 379.25</b>	UNICOM <b>122.8 (CTAF) Ø</b>
------------------------------	--	---------------------------------



ELEV 468	TDZE 465
----------	----------



CATEGORY	A	B	C	D
LPV DA	833-1 1/4	368 (400-1 1/4)		NA
LNAV/VNAV DA	980-1 3/4	515 (600-1 3/4)		NA
LNAV MDA	1080-1	615 (700-1)	1080-1 3/4 615 (700-1 3/4)	NA

SE-1, 14 MAY 2026 to 11 JUN 2026

SE-1, 14 MAY 2026 to 11 JUN 2026