

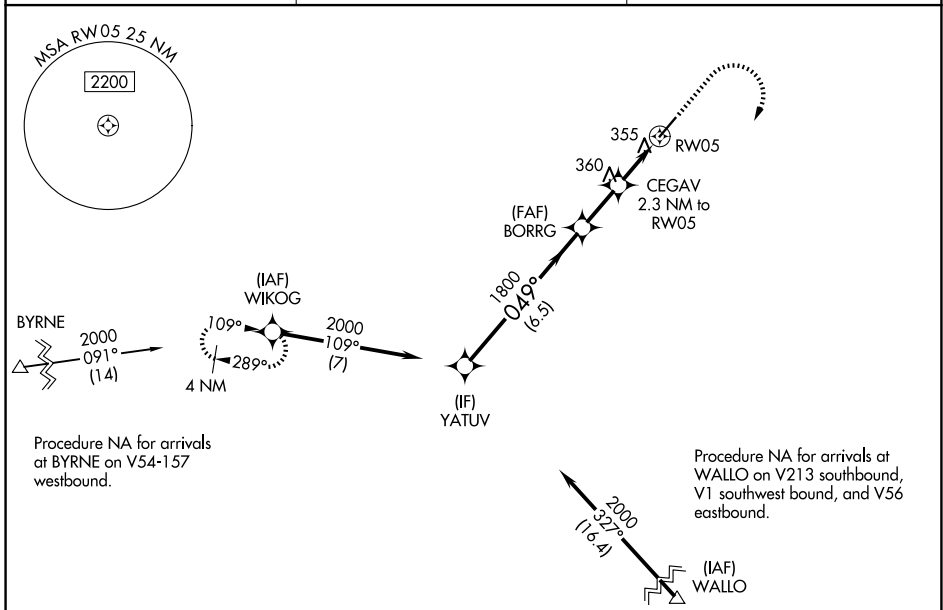
WAAS CH <b>69431</b> <b>W05A</b>	APP CRS <b>049°</b>	Rwy Ldg TDZE <b>166</b> Apt Elev <b>166</b>	<b>5254</b>
--	------------------------	---	-------------

# RNAV (GPS) RWY 5

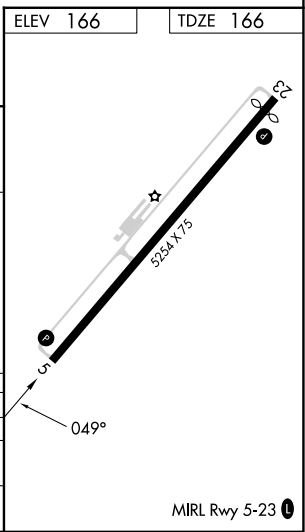
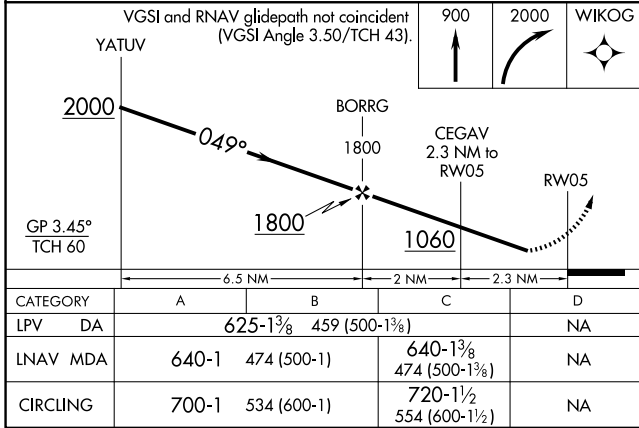
MOUNT OLIVE MUNI (W40)

RNP APCH - GPS.		MISSED APPROACH: Climb to 900 then climbing right turn to 2000 direct WIKOG and hold.
<p><b>▼</b> <b>▲</b></p> <p>Rwy 5 helicopter visibility reduction below 3/4 SM NA. When local altimeter setting not received, use Goldsboro altimeter setting.</p>		

AWOS-3P <b>120.075</b>	SEYMOUR JOHNSON APP CON* <b>119.7 273.6</b>	UNICOM <b>122.8 (CTAF) 0</b>
---------------------------	--	---------------------------------



ELEV 166	TDZE 166
----------	----------



SE-2, 14 MAY 2026 to 11 JUN 2026

SE-2, 14 MAY 2026 to 11 JUN 2026