

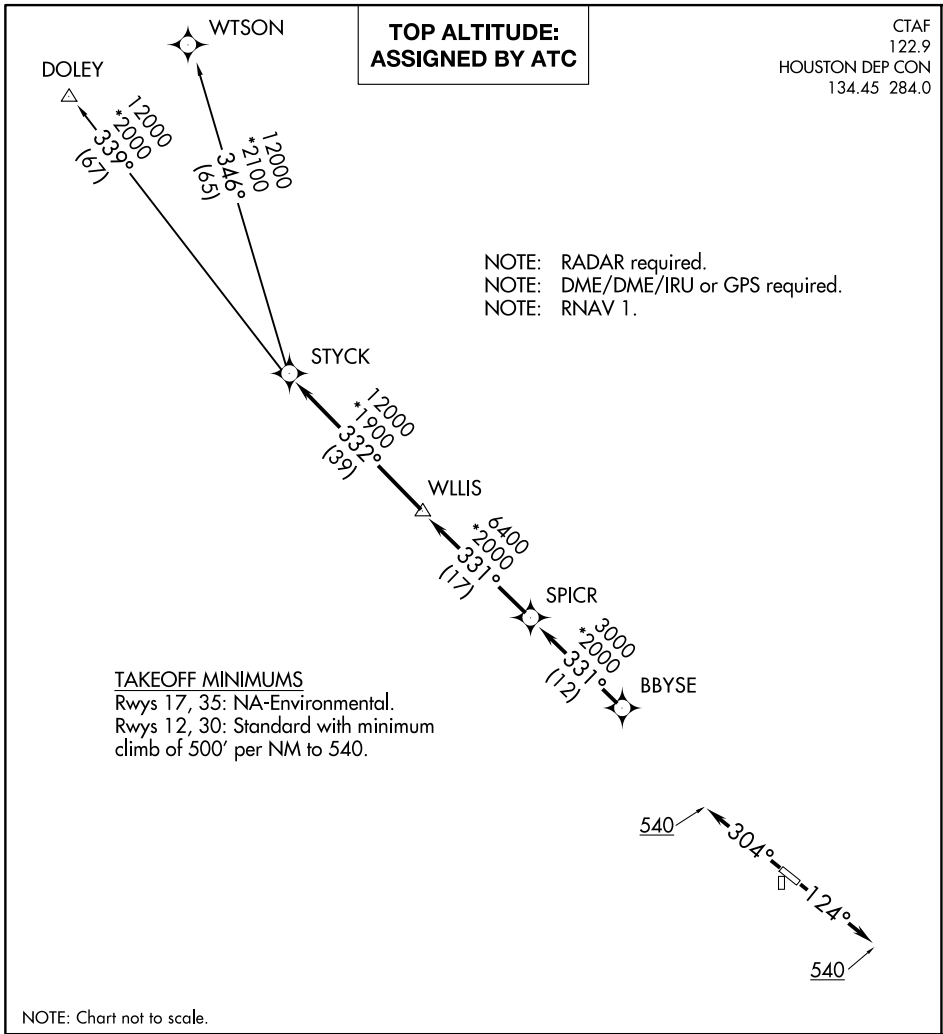
(STYCK8.STYCK) 21280

AL-6395 (FAA)

CHAMBERS COUNTY (T00)

# STYCK EIGHT DEPARTURE (RNAV)

ANAHUAC, TEXAS



SC-5, 14 MAY 2026 to 11 JUN 2026

SC-5, 14 MAY 2026 to 11 JUN 2026

**DEPARTURE ROUTE DESCRIPTION**

**TAKEOFF RUNWAY 12:** Climb on heading 124° to 540 for RADAR vectors to BBYSE, thence. . .

**TAKEOFF RUNWAY 30:** Climb on heading 304° to 540 for RADAR vectors to BBYSE, thence. . .

. . . on track 331° to SPICR, then on track 331° to WLLIS, then on track 332° to STYCK, then on (transition). Maintain ATC assigned altitude. Expect filed altitude 10 minutes after departure.

DOLEY TRANSITION (STYCK8.DOLEY)  
WTSON TRANSITION (STYCK8.WTSON)

# STYCK EIGHT DEPARTURE (RNAV)

(STYCK8.STYCK) 07OCT21

ANAHUAC, TEXAS

CHAMBERS COUNTY (T00)