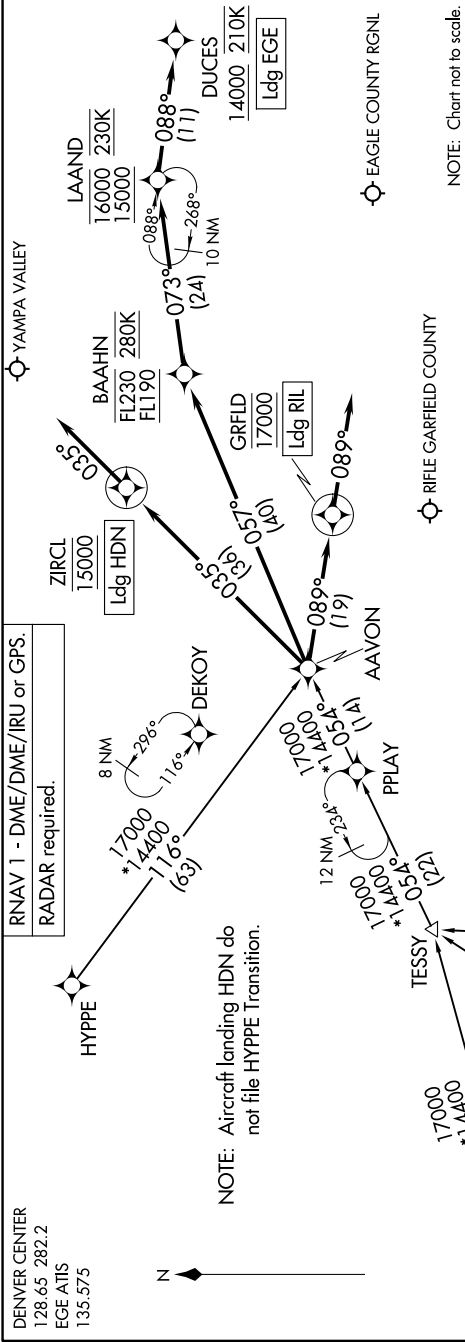


SW-1, 14 MAY 2026 to 11 JUN 2026



ARRIVAL ROUTE DESCRIPTION

- HYPPE TRANSITION (HYPPE:AAVON1)
 - IBSKI TRANSITION (IBSKI:AAVON1)
 - KIMMR TRANSITION (KIMMR:AAVON1)
 - MAESA TRANSITION (MAESA:AAVON1)
 - PPLAY TRANSITION (PPLAY:AAVON1)
 - TESSY TRANSITION (TESSY:AAVON1)
 - VIRDE TRANSITION (VIRDE:AAVON1)
- LANDING EGE: From AAVON on track 057° to cross BAAHN between FL190 and FL230 and at 280K, then on track 073° to cross LAAND between 15000 and 16000 and at 230K, then on track 088° to cross DUCES at or above 14000 and at 210K. Expect RNAV RWY 25 approach.
- LANDING HDN: From AAVON on track 035° to cross ZIRCL at 15000, then on track 035°. Expect RADAR vectors to final approach course.
- LANDING RIL: From AAVON on track 089° to cross GRFLD at 17000, then on track 089°. Expect RADAR vectors to final approach course.

SW-1, 14 MAY 2026 to 11 JUN 2026