

SW-1, 14 MAY 2026 to 11 JUN 2026

DEPARTURE ROUTE DESCRIPTION

TAKEOFF RUNWAY 25: Begin a climbing left turn as soon as practicable but no later than DER heading 206° to 7100, then direct COPER, then on depicted route to cross APRES at or above 13100, thence. . . .

. . . on (assigned) transition, maintain 15000. Expect filed altitude 10 minutes after departure.

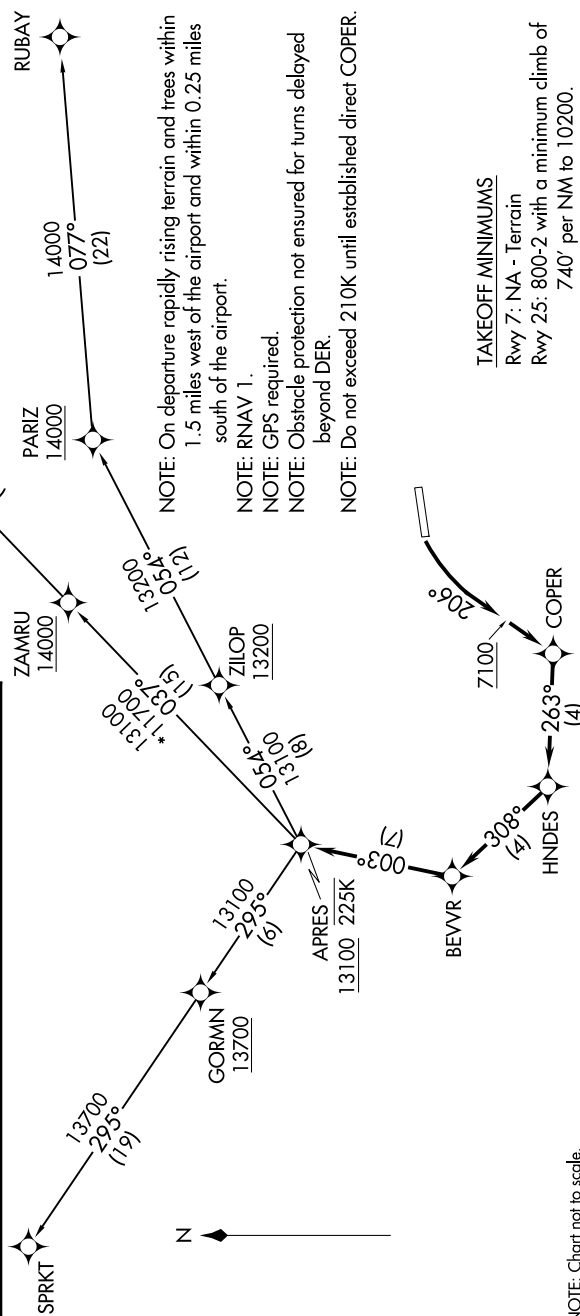
BELGN TRANSITION (BEVVR1.BELGN)

RUBAY TRANSITION (BEVVR1.RUBAY)

SPRKT TRANSITION (BEVVR1.SPRKT)

**TOP ALTITUDE:
15000**

- ATIS 135.575
- CLINC DEL 124.75
- DENVER CLNC DEL 124.75
- (When tower closed)
- GND.CON
- EAGLE TOWER * 121.8
- DENVER CENTER 119.8
- 128.65 282.2



NOTE: On departure rapidly rising terrain and trees within 1.5 miles west of the airport and within 0.25 miles south of the airport.

NOTE: RNAV 1.

NOTE: GPS required.

NOTE: Obstacle protection not ensured for turns delayed beyond DER.

NOTE: Do not exceed 210K until established direct COPER.

TAKEOFF MINIMUMS

Rwy 7: NA - Terrain
 Rwy 25: 800-2 with a minimum climb of 740', per NM to 10200.

SW-1, 14 MAY 2026 to 11 JUN 2026