

# VAAI ONE ARRIVAL (RNAV)

AL-6403 (FAA)

EAGLE COUNTY RGNL (EGE)  
EAGLE, COLORADO

SW-1, 14 MAY 2026 to 11 JUN 2026

SW-1, 14 MAY 2026 to 11 JUN 2026

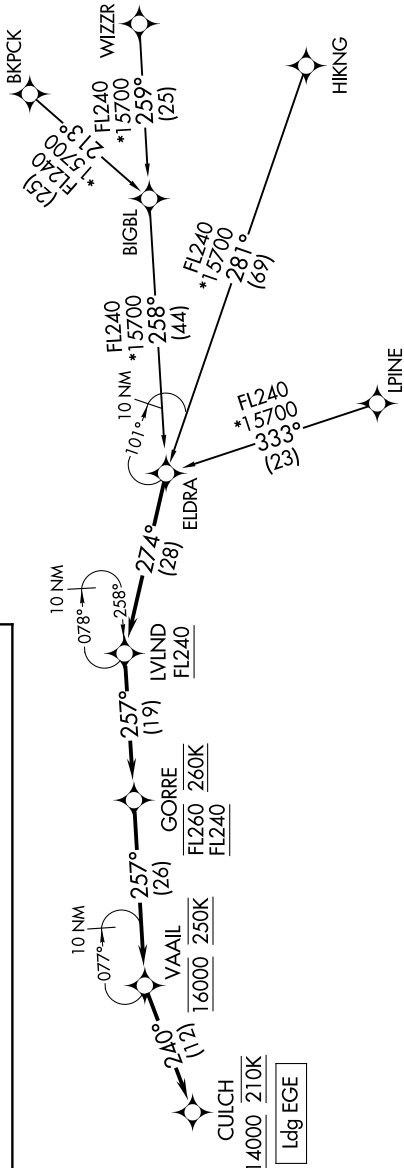
## ARRIVAL ROUTE DESCRIPTION

- BIGBL TRANSITION (BIGBL.VAAI1)
- BKPCK TRANSITION (BKPCK.VAAI1)
- HIKNG TRANSITION (HIKNG.VAAI1)
- LPINE TRANSITION (LPINE.VAAI1)
- WIZZR TRANSITION (WIZZR.VAAI1)

From ELDRA on track 274° to cross LVLND at or above FL240, then on track 257° to cross GORRE between FL240 and FL260 and at 260K, then on track 257° to cross VAAI at 16000 and at 250K, then on track 240° to cross CULCH at or above 14000 and at 210K. Expect RNAV RWY 25 approach.

DENVER CENTER  
128.65 282.2  
ATIS  
135.575

RNAV 1 - DME/DME/IRU or GPS.  
RADAR required for non-GPS equipped aircraft.



NOTE: Chart not to scale.