

APP CRS <b>323°</b>	Rwy Ldg TDZE Apt Elev <b>N/A</b> <b>N/A</b> <b>6882</b>
------------------------	---

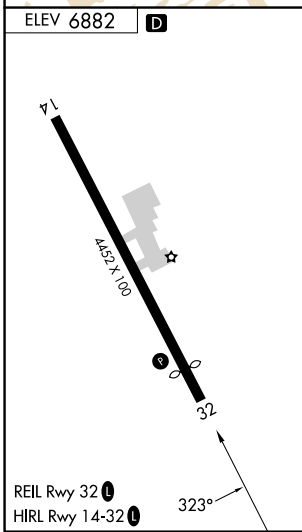
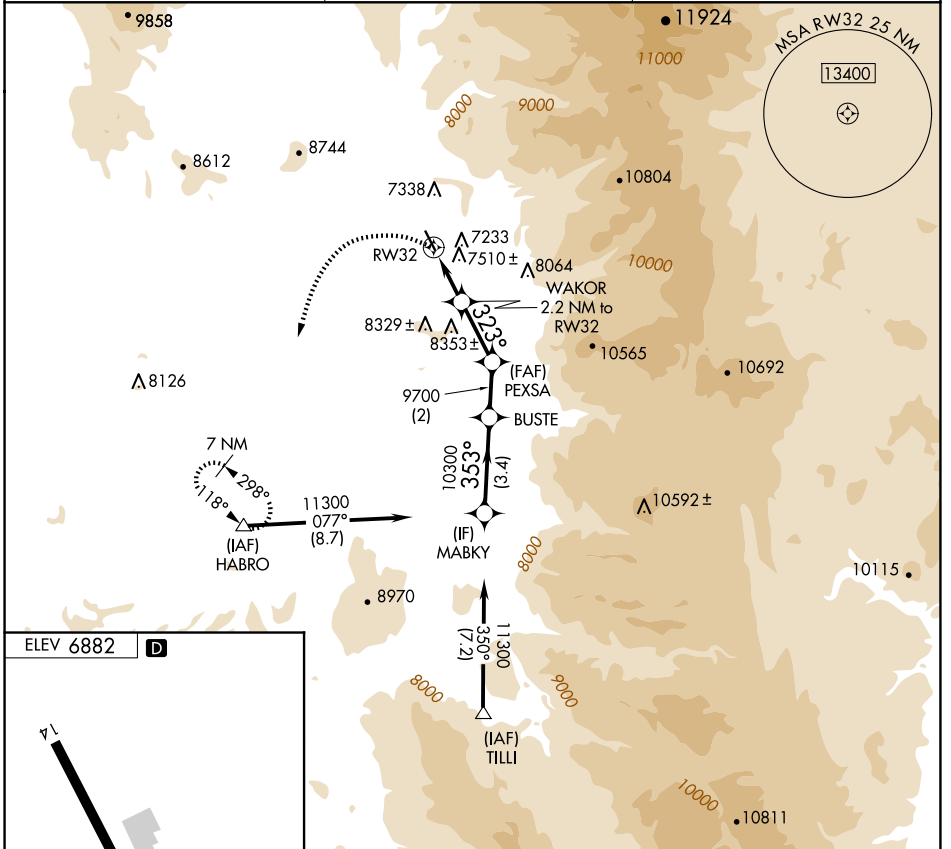
# RNAV (GPS)-E

STEAMBOAT SPRINGS/BOB ADAMS FLD (SBS)

**▽** Circling NA northeast of Rwy 14-32.  
**▲** NA  
**✳** -25°C  
 DME/DME RNP- 0.3 NA.  
 When local altimeter setting not received, use Yampa Valley altimeter setting and increase all MDA 80 feet.

**MISSED APPROACH:** Climbing left turn to 11300 direct HABRO and hold, continue climb-in-hold to 11300.

AWOS-3 <b>118.325</b>	DENVER CENTER <b>120.475 235.975</b>	UNICOM <b>122.8 (CTAF) 0</b>
--------------------------	---	---------------------------------



11300	HABRO	VGSI and descent angles not coincident (VGSI Angle 4.00/TCH 40).	MABKY
	▲		
	WAKOR 2.2 NM to RW32	PEXSA	BUSTE
	323°	353°	11300
	8740	9700	10300
	7.75° TCH 40	2 NM	3.4 NM
	2.2 NM	2.4 NM	
CATEGORY	A	B	C
<b>C</b> CIRCLING	8140-1¼ 1258 (1300-1¼)	8140-1½ 1258 (1300-1½)	NA

SW-1, 14 MAY 2026 to 11 JUN 2026

SW-1, 14 MAY 2026 to 11 JUN 2026