

VOR/DME BQZ 112.2 Chan 59	APP CRS 352°	Rwy Ldg TDZE Apt Elev 6882	N/A N/A 6882
---	------------------------	---	---------------------------

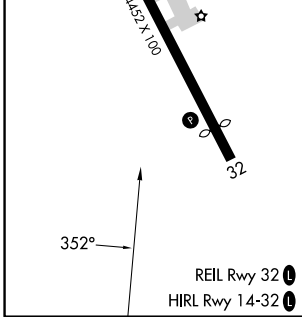
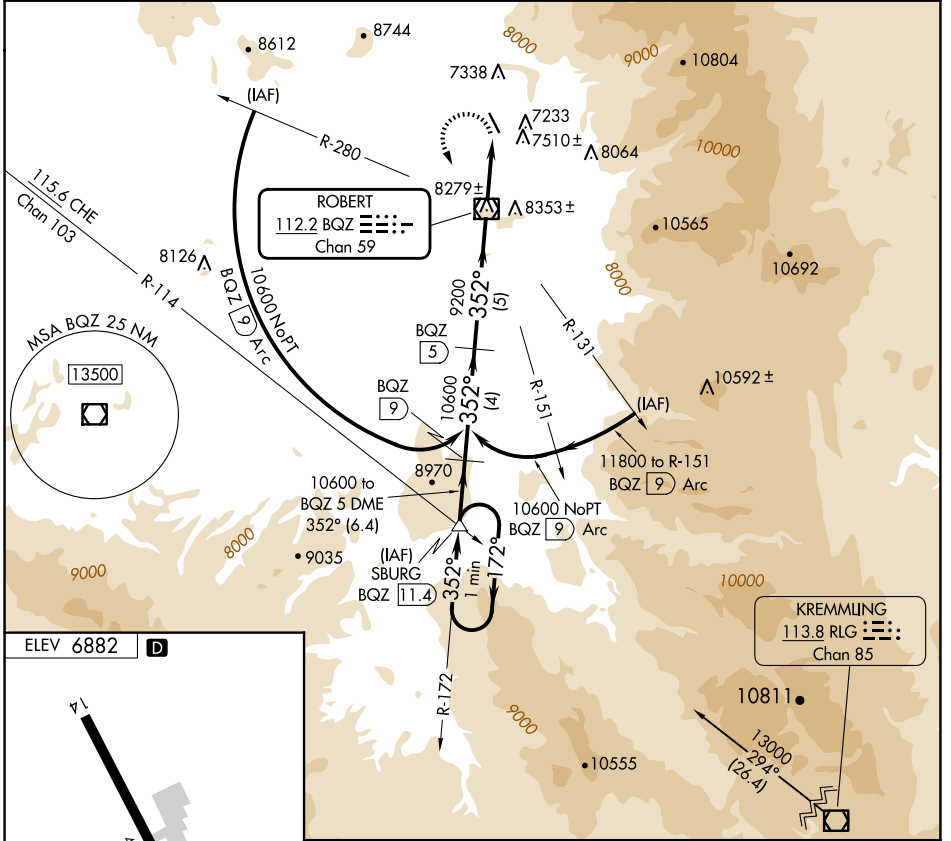
VOR/DME-C

STEAMBOAT SPRINGS/BOB ADAMS FLD (SBS)

⚠ When local altimeter setting not received, use Yampa Valley altimeter setting and increase all MDA 80 feet. Procedure NA at night. Circling NA northeast of Rwy 14-32.

MISSED APPROACH: Climbing left turn to 12100 direct BQZ VOR/DME then on BQZ VOR/DME R-172 to SBURG INT/BQZ 11.4 DME and hold.

AWOS-3 118.325	DENVER CENTER 120.475 235.975	UNICOM 122.8 (CTAF) 0
--------------------------	---	---------------------------------



One Minute Holding Pattern	SBURG BQZ 11.4	12100	BQZ	BQZ R-172	SBURG
12100 ← 172°	→ 352°	→ 352°	BQZ 5	BQZ VOR/DME	BQZ 2.9
	6.4 NM	5 NM	2.9 NM		
CATEGORY	A	B	C	NA	D
CIRCLING	8140-1¼ 1258 (1300-1¼)	8140-1½ 1258 (1300-1½)			

STEAMBOAT SPRINGS, COLORADO
Amdt 1D 22APR21

STEAMBOAT SPRINGS/BOB ADAMS FLD (SBS)
40°31'N-106°52'W
VOR/DME-C

SW-1, 14 MAY 2026 to 11 JUN 2026

SW-1, 14 MAY 2026 to 11 JUN 2026