

WAAS CH <b>86638</b> <b>W24A</b>	APP CRS <b>235°</b>	Rwy Ldg <b>5500</b> TDZE <b>86</b> Apt Elev <b>99</b>
--	------------------------	---

# RNAV (GPS) RWY 24

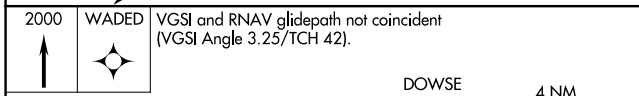
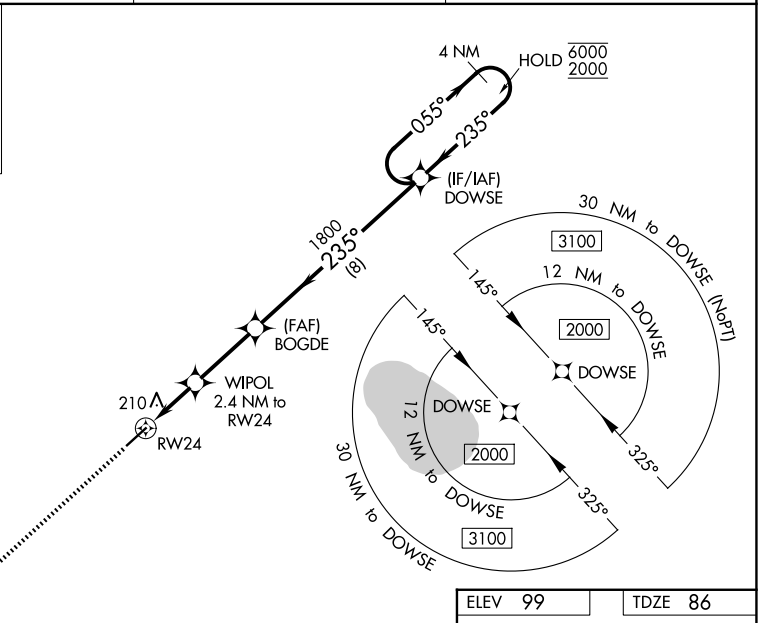
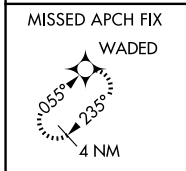
COLUMBUS COUNTY RGNL (CPC)

RNP APCH - GPS

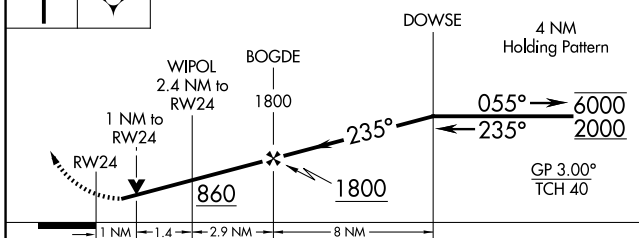
▼ Baro-VNAV and VDP NA when using EYF altimeter setting. For uncompensated Baro-VNAV systems, LNAV/VNAV NA below -15°C or above 54°C. Rwy 24 helicopter visibility reduction below ¼ SM NA. When local altimeter setting not received, use EYF altimeter setting and increase LPV DA to 427 feet and all visibilities ½ SM. Increase LNAV/VNAV DA to 441 feet and all visibilities ½ SM. Increase all MDAs 60 feet and LNAV visibility Cat C/D ¼ SM, and Circling visibility Cat C/D ¼ SM.

MISSED APPROACH:  
Climb to 2000 direct  
WADED and hold.

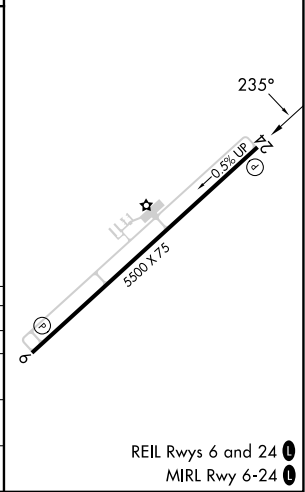
AWOS-3 <b>118.375</b>	MYRTLE BEACH APP CON * <b>119.2 350.3</b>	UNICOM <b>122.8 (CTAF) 0</b>
--------------------------	--	---------------------------------



VGSI and RNAV glidepath not coincident (VGSI Angle 3.25/TCH 42).



ELEV 99	TDZE 86
---------	---------



CATEGORY	A	B	C	D
LPV DA		374-7/8	288 (300-7/8)	
LNAV/VNAV DA		388-7/8	302 (300-7/8)	
LNAV MDA		460-1	374 (400-1)	
CIRCLING	540-1	580-1	680-1½	760-2¼
	441 (500-1)	481 (500-1)	581 (600-1½)	661 (700-2¼)

REIL Rws 6 and 24 0  
MIRL Rwy 6-24 0

SE-2, 14 MAY 2026 to 11 JUN 2026

SE-2, 14 MAY 2026 to 11 JUN 2026