

WAAS CH 50424 W26A	APP CRS 264°	Rwy Ldg TDZE Apt Elev	3297 881 881
--	------------------------	-----------------------------	---

RNAV (GPS) RWY 26

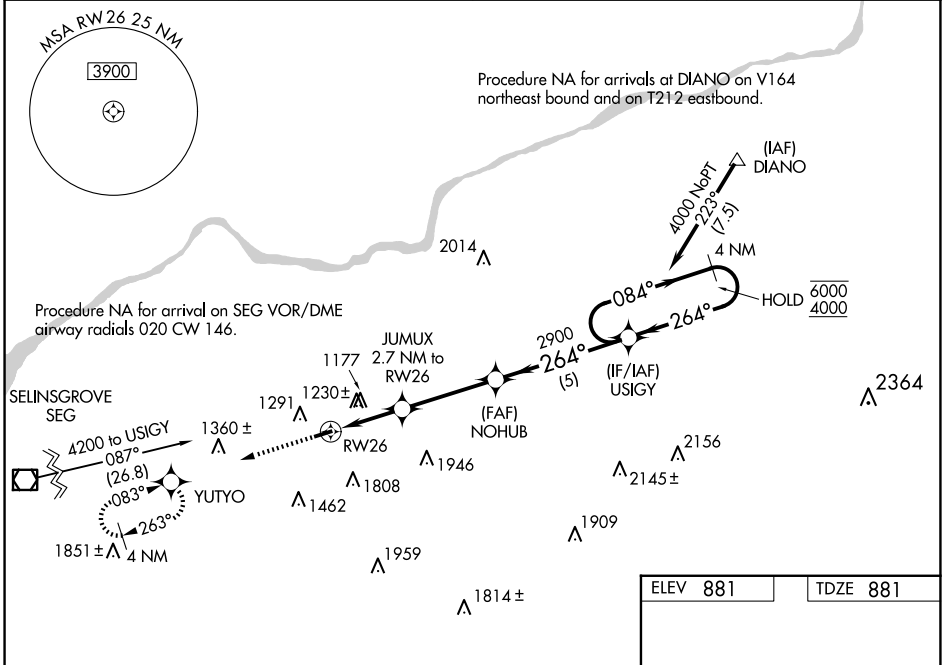
NORTHUMBERLAND COUNTY (N79)

RNP APCH - GPS.

▽ Baro-VNAV and VDP NA when using Selinsgrove altimeter setting. Rwy 26 helicopter visibility reduction below 3/4 SM NA. For uncompensated Baro-VNAV systems, LNAV/VNAV NA below -16°C or above 54°C. When local altimeter setting not received, use Selinsgrove altimeter setting and increase LPV DA to 1529 feet and all visibilities 1/4 SM. Increase LNAV/VNAV DA to 1651 feet and all visibilities 5/8 SM. Increase all MDAs 100 feet and LNAV visibility Cat C 1/4 SM.

MISSED APPROACH:
Climb to 3400 direct YUTYO and hold, continue climb-in-hold to 3400.

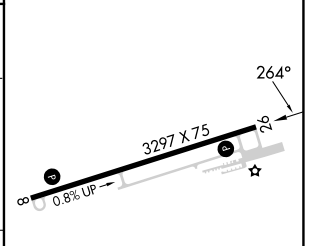
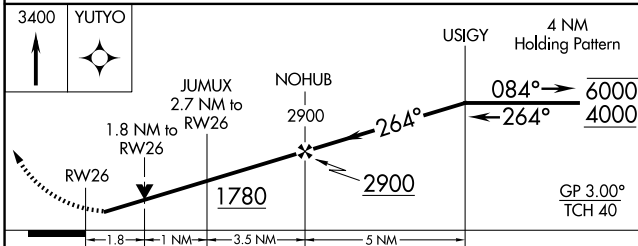
AWOS-3 119.175	HARRISBURG APP CON 118.25 269.45	UNICOM 122.8 (CTAF)	121.8 0
--------------------------	--	-------------------------------	-----------------------



NE-4, 14 MAY 2026 to 11 JUN 2026

NE-4, 14 MAY 2026 to 11 JUN 2026

ELEV 881	TDZE 881
----------	----------



CATEGORY	A	B	C	D
LPV DA	1437-15/8	556 (600-15/8)		NA
LNAV/VNAV DA	1559-17/8	678 (700-17/8)		NA
LNAV MDA	1480-1	599 (600-1)	1480-1 1/4 599 (600-1 1/4)	NA
CIRCLING	1820-1 1/4 939 (1000-1 1/4)	1880-1 1/2 999 (1000-1 1/2)	2120-3 1239 (1300-3)	NA

MIRL Rwy 8-26 **0**

REIL Rws 8 and 26 **0**