

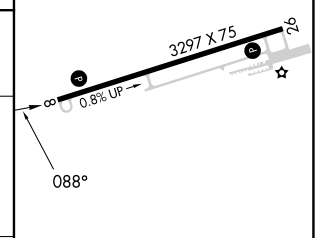
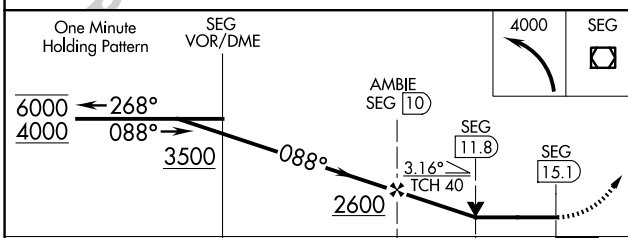
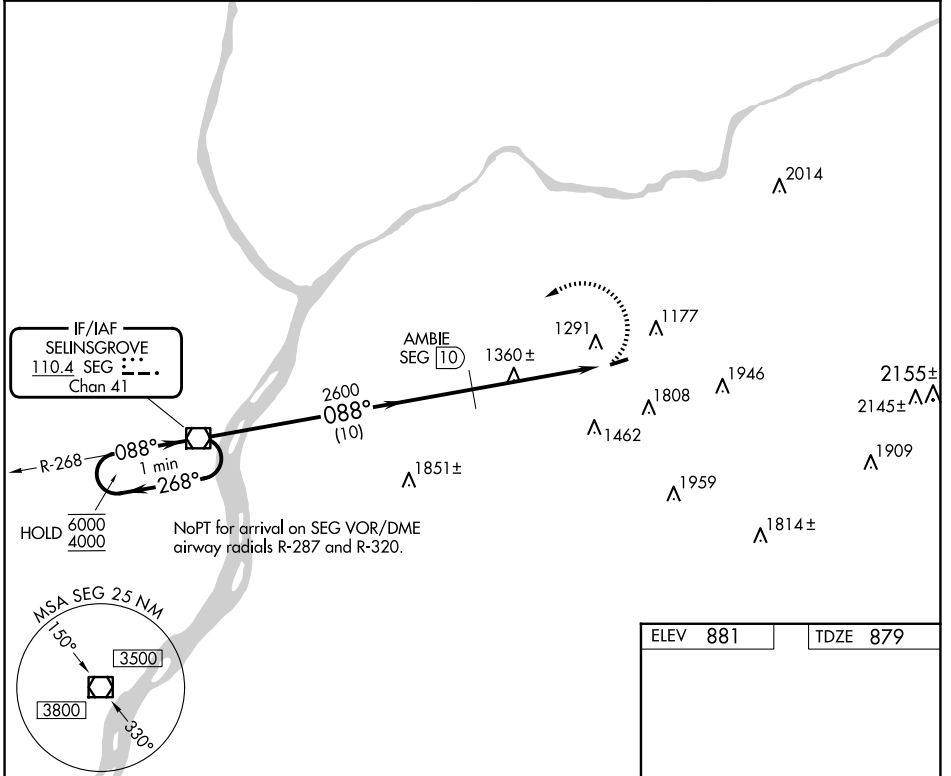
VOR/DME SEG	APP CRS	Rwy Ldg TDZE	<b>3297</b>
<b>110.4</b>	<b>088°</b>	879	
Chan 41		Apt Elev	<b>881</b>

# VOR RWY 8

NORTHUMBERLAND COUNTY (N79)

DME required.	MISSED APPROACH: Climbing left turn to 4000 direct SEG VOR/DME and hold.
▽ Rwy 8 helicopter visibility reduction below ¼ SM NA. ▲ NA When local altimeter setting not received, use Selingsgrove altimeter setting and increase all MDAs 100 feet.	

AWOS-3 <b>119.175</b>	HARRISBURG APP CON <b>118.25 269.45</b>	UNICOM <b>122.8</b> (CTAF)	<b>121.8</b> <b>0</b>
--------------------------	--	-------------------------------	-----------------------



CATEGORY	A	B	C	D
S-8	1960-1¼ 1081 (1100-1¼)	1960-1½ 1081 (1100-1½)	1960-3 1081 (1100-3)	NA
CIRCLING	1960-1¼ 1079 (1100-1¼)	1960-1½ 1079 (1100-1½)	2120-3 1239 (1300-3)	NA

ELEV	881	TDZE	879
MIRL Rwy 8-26	<b>0</b>		
REIL Rwy 8 and 26	<b>0</b>		
FAF to MAP 5.1 NM			
Knots	60	90	120 150 180
Min:Sec	5:06	3:24	2:33 2:02 1:42

NE-4, 14 MAY 2026 to 11 JUN 2026

NE-4, 14 MAY 2026 to 11 JUN 2026